



# Juntendo University

2025 - 2026

## Graduate Schools

Graduate School of Medicine

Master's Program / Doctoral Program

Graduate School of Health and Sports Science

Master's Program / Doctoral Program

Graduate School of Health Care and Nursing

Master's Program / Doctoral Program

Graduate School of Health Science

Master's Program / Doctoral Program

Graduate School of International Liberal Arts

Master's Program / Doctoral Program

Graduate School of Health Data Science

Master's Program / Doctoral Program

Graduate School of Medical Science

Master's Program

Graduate School of Pharmacy and  
Pharmaceutical Sciences

Doctoral Program

## Faculties

Faculty of Medicine

Department of Medicine

Faculty of Health and Sports Science

Department of Health and Sports Science

Faculty of Health Care and Nursing

Department of Nursing

Faculty of Health Science and Nursing

Department of Nursing

Faculty of International Liberal Arts

Department of International Liberal Arts

Faculty of Health Science

Department of Physical Therapy

Department of Radiological Technology

Faculty of Medical Science

Department of Clinical Laboratory Technology

Department of Clinical Engineering

Faculty of Health Data Science

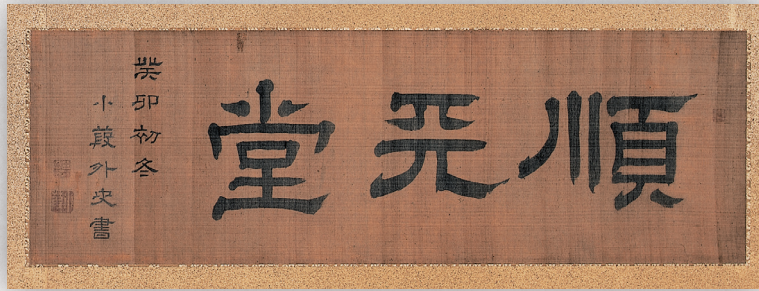
Department of Health Data Science

Faculty of Pharmacy

Department of Pharmacy

J U N T E N D O





### Motto

*Jin*

(Benevolence)

I exist as you exist, with a heart that considers and cherishes others. That is the spirit of *Jin*.

### Principle

*Fudan Zenshin*

(Continuously moving forward)

Striving for advances and taking on new challenges

### School Culture

*Sanmu Shugi*

(The “three noes” principle)

No discrimination on the grounds of gender, nationality, or academic background

# Contents 堂 弄 順

Faculty of Medicine	03
Faculty of Health and Sports Science	07
Faculty of Health Care and Nursing	11
Faculty of Health Science and Nursing	15
Faculty of International Liberal Arts	18
Faculty of Health Science	22
Faculty of Medical Science	26
Faculty of Health Data Science	29
Faculty of Pharmacy	32
Graduate School of Medicine	36
Graduate School of Health and Sports Science	41
Graduate School of Health Care and Nursing	44
Graduate School of Health Science	47
Graduate School of International Liberal Arts	49
Graduate School of Health Data Science	51
Graduate School of Medical Science	53
Graduate School of Pharmacy and Pharmaceutical Sciences	56
Juntendo's Progress	59
Campus and Affiliated Hospital Access	63



# Faculty of Medicine

Juntendo University Faculty of Medicine provides students striving to become physicians with the education required to graduate after six years and immediately pass the National Examination for Medical Practitioners. We also educate them to become highly intelligent physicians of excellent character, with a well-rounded education and abundant sensitivity. Students and faculty members at Juntendo forge a close relationship, ensuring respect for the individuality of each and every person in both medical education and extracurricular activities. We give consideration to all aspects of education to ensure that everyone can enjoy an enriching student life.



## FACULTY DATA

[ As of May 1, 2025 ]

Degree available Bachelor of Medicine

Department Department of Medicine

Student gender balance



Number of members

Full-time faculty (including graduate school)	1,646
Planned enrollment capacity	138
Students	830

Qualification available

Eligibility to take the National Examination for Medical Practitioners

Campus	1st year	Sakura Campus
	2nd - 6th year	Hongo-Ochanomizu Campus

## Key Features of the Faculty

---

### Six university hospitals

The Faculty of Medicine has six affiliated hospitals with a total of 3,589 beds, one of the largest number of any medical school in Japan. Our six hospitals are developing both all-round capabilities and high levels of expertise to meet wide-ranging medical needs in such areas as advanced medical care, community medicine, emergency medicine, perinatal care, geriatrics, psychiatric care, and cancer treatment. Medical students will learn through clinical exercises involving a diverse array of cases at these hospitals.

### Fostering a sense of cooperation through dormitory life

All first-year undergraduates experience communal living alongside students from the Faculty of Health and Sports Science at the Keishin Student Dormitory at our Sakura Campus in Inzai City, Chiba Prefecture. This is a Juntendo tradition that has remained unchanged since the university's founding. Living at Keishin has an educational goal, in that it seeks to teach each and every dormitory resident the art of behaving as they choose without being a nuisance to others. By providing opportunities for students with different ways of thinking, interests, and preferences to interact across faculty boundaries, dormitory life fosters a sense of cooperation and a warm and generous spirit of consideration toward others.

### Consistently outstanding pass rates in the National Examination for Medical Practitioners

While Juntendo naturally regards academic ability as important, we also assess candidates on the basis of their sensitivity and the character, insight, and well-rounded general education

that a physician should have, attaching importance to the interview, short essay examination, and evaluations at the elementary, junior high, and high school level. The validity of this approach is borne out by the fact that very few of the students admitted to our university drop out or have to repeat a year, and also by our maintenance of a high pass rate in the National Examination for Medical Practitioners.

### Cultivating elite medical researchers

For those who aspire to be research physicians, Juntendo's Faculty of Medicine offers the Program to Foster Basic Medical Researchers, aimed at cultivating elite medical researchers. This special curriculum begins in the first year, enabling students to start their research early and earn graduate school credits even before graduation. After completing graduate school and earning a doctoral degree, graduates of this program may continue their research as assistant professors right here at Juntendo.

### A diverse entrance examination system offering broader opportunities to candidates

We offer candidates a choice of our own general admission system, an admission system based on the Common Test for University Admissions, and an admission system that combines the two. Under our quota for selecting applicants from provincial areas of Japan, we seek applications from students with a strong desire to contribute to community medicine in the future as a physician. Our international clinician and research physician selection system is aimed at those who aspire to become research physicians on the global stage and features an entrance examination that seeks to identify talented individuals with an international outlook.

## Studies at the Faculty of Medicine

---

With advances in medical science progressing at a dizzying pace in recent years, students at the Faculty of Medicine have to acquire an immense range of knowledge and skills. Consequently, demonstrating an active approach to learning will be crucial, to achieve sufficient learning outcomes within the limited class time available.

Over your six years at the Faculty of Medicine, the essential knowledge, skills, and attitudes required to become a physician or researcher that you learn will be the minimum necessary. In fact, you will need to maintain an active attitude to learning throughout the rest of your life after graduation, so that you can enhance them further.

The most important aspect of education in the Faculty of Medicine is cultivating the ability to learn, think, and solve problems for yourself, rather than passively acquiring knowledge. We therefore want you to let go of passive approaches and foster the habit of active learning.

## Why Study Here?

### Classrooms equipped with cutting-edge ICT

Toward the end of their first year, students begin their specialist medical education at the Hongo-Ochanomizu Campus. The Century Tower lecture building is fully equipped with classrooms boasting the very latest in ICT, which is used during lessons.



### Multidisciplinary hospital practical classes

We invite physicians, nurses, and a diverse array of other professionals working in hospital settings to serve as lecturers, teaching students about the diverse functions of hospitals and each professional role as part of their early experiential education. Lectures by people working in front-line medical settings enhance students' awareness of themselves as medical professionals and enable them to learn the basic attitudes and etiquette required in team-based medicine.



### Small-group learning

In the fourth-year core clinical exercise and fifth and sixth year specialist clinical exercise elements, the Faculty of Medicine provides finely tuned guidance to students in groups of 4-5, enabling them to learn how to take a medical history in a way that ensures they gain an accurate understanding of the patient's symptoms, as well as mastering the attitudes and skills required for examining patients. The meticulous instruction achieved by introducing small-group learning enhances students' ability to assess situations accurately and solve problems in medical settings.



### Basic procedure exercise

As basic procedures are essential skills for a physician, we ensure that students learn the basic surgical procedures required in emergencies of all kinds. In these practicums, students learn the handling of syringes and injection needles, ligation (tying) and suturing techniques, and cardiopulmonary resuscitation. The classes feature a combination of lectures and exercise, with students expected to fully master the basic procedures taught in the exercise through repeated self-study.

While mastering skills is important, another goal of the basic procedure exercise is to foster in students the attitudes they will require when engaging with patients as physicians, including a conscientious approach to trying to help patients.



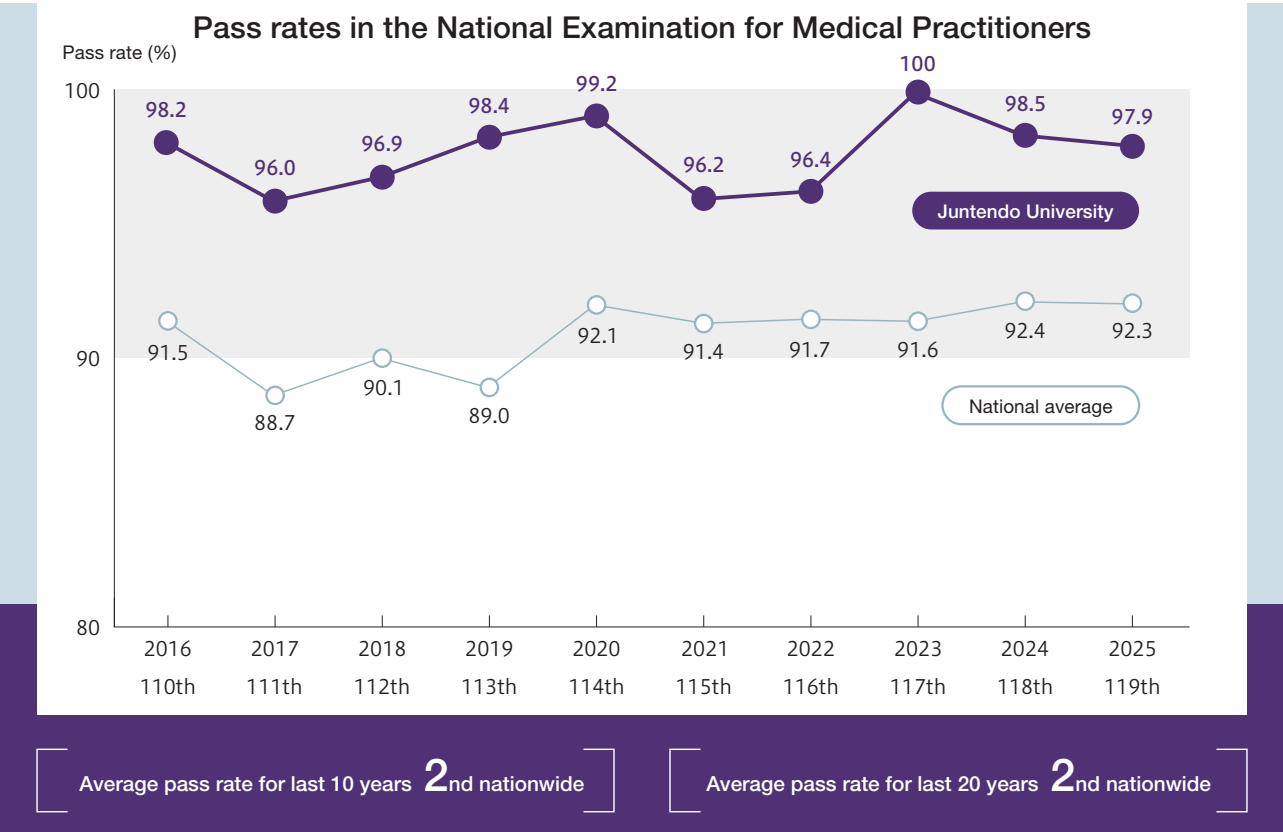
**Study abroad to become a world-class physician**

The sixth-year student internship exercise permits students to study their preferred discipline not only at Juntendo, but also at other facilities within Japan and overseas. In their final year, students may choose to spend 2-8 weeks on an overseas

internship exercise in their field of interest, giving them the opportunity to cultivate an international outlook, satisfy their intellectual curiosity, and experience first-hand the fascination of medical science.

**Career Paths after Graduation**

Students who have graduated from the Faculty of Medicine and passed the National Examination for Medical Practitioners generally undertake two years of early clinical training on a program at a core clinical training hospital accredited by the Ministry of Health, Labour and Welfare.



**Pass rates in the National Examination for Medical Practitioners**

In terms of average pass rate in the National Examination for Medical Practitioners, Juntendo University Faculty of Medicine has been second out of all national, public, and private universities over both the past 10 years and the past 20 years.



# Faculty of Health and Sports Science

At the Faculty of Health and Sports Science, students gain a wealth of knowledge and a well-rounded liberal arts education through diverse lectures and various practical and technical courses, along with interdisciplinary initiatives in partnership with the Faculty of Medicine and other faculties. These cross-cutting endeavors leverage Juntendo's distinctive features as a comprehensive health university.

In doing so, we aim to educate future leaders equipped with multifaceted perspectives on sport and health, a high level of expertise, and a strong sense of ethics, who can contribute to the creation of a sustainable society through sport. Based on health and sports science, we train students to support others, build connections between communities, and drive society forward.



## FACULTY DATA

[ As of May 1, 2025 ]

### Degree available

Department of Health and Sports Science:  
Bachelor of Health and Sports Science

### Number of members

Full-time faculty (including graduate school)	91
Planned enrollment capacity	600
Students	2,459

### Student gender balance



Male: 1,590

Female: 869

	Department of Health and Sports Science
Type I high school teaching license (health and physical education)	●
Type I junior high school teaching license (health and physical education)	●
Type I special needs school teaching license	●
Type II elementary school teaching license (correspondence course)	◆
Qualified para-sports instructor (beginner)	●
Athletic trainer (qualified to take the examination)	●
Health fitness programmer (qualified to take the examination)	●
Event management exam (qualified to take the examination)	●
Class 1 health supervisor (national examination)	●

- Qualification can be earned by taking the subjects offered
- ◆ Qualification requiring study at a partner university (Tamagawa University correspondence course)

## Health and sports science serves as the foundation for us to support people, connect communities, and drive society forward.

We will work together to create a new era, focusing on the key words sports and health.

### Six courses in three fields form the core of studies

The four-year curriculum consists of three subject groups: basic specialty courses, professional development courses, and specialized courses

Having laid the foundations by gaining basic knowledge in their first and second years, students begin in their third year to acquire more highly specialized knowledge and capabilities in their chosen advanced specialized subjects, thereby cultivating the ability to contribute to society.

1st Year	2nd Year	3rd Year	4th Year
Basic Specialty Courses		Core Courses (Specialized Courses)	
Specialized Courses (Professional Development Courses)		Compulsory Programs / Elective Programs	
Introductory Specialty Courses Practical Exercise Courses	Sports Science Area Sports Health and Education Area Management Area	Competitive Sports Program Sports Coaching Science Program Sports Medicine Program Sports Education Program Health Science Program Sports Management Program	Graduation Research
Introduction to Health and Sports Science	Career Design	Graduation Seminar	
General Education Courses	Foreign Language Courses / Humanities and Social Science Courses / Natural Science Courses		

## Key Features of the Faculty

### Educating leaders of the global sports world

The Faculty of Health and Sports Science contributes to Japan's successes in the Olympics and Paralympics by producing leaders of the global sports world, including competitors, managers, and coaches. We also cultivate talented individuals who play major roles in sports administration, education, and research.

### Ogawa Gymnastics Arena

This facility houses not only a gymnastics arena, but also squash courts and athletic training rooms.



### A cutting-edge sports education and research environment

Our cutting-edge health and sports science research facilities and equipment enable us to influence the fields of education and research, as well as to offer an ample range of lectures and practical classes. We are continuing to enhance our sports facilities to serve as hubs for international exchange and the cultivation of world-class athletes.

### Gymnasium 3

In addition to arena facilities with various specialist sports courts and a 50 m indoor pool with movable floor, this sports center houses a medical clinic.



---

### Campus life that nurtures a richness of spirit

The communal lifestyle enjoyed by first-year undergraduates of the Faculty of Health and Sports Science and Faculty of Medicine while spending a year living in the university dormitory is positioned as an opportunity for hands-on learning that cannot be achieved through classes alone. Living in a communal environment cultivates a richness of spirit based on the ethos encapsulated by the university motto *Jin* (benevolence).



### Meticulous careers guidance and ample learning support

Second-year students take the compulsory subject Career Design, and from the third year, we hold workshops and courses suited to each student's target career path on a total of 130 days per year. In addition, seminar supervisors and full-time careers staff work together to provide support tailored to each individual student's preferred career path from an early stage, with ample follow-up until students finalize their career decisions.



---

## Why Study Here?

### Aiming to contribute to society through sport

We cultivate individuals who understand the effects and potential of sport, and can feed back to society the knowledge they have gained of education or the development of appropriate health and fitness programs.

### Gaining a grounding in medical science

Tapping into the advantages of attending a university with a Faculty of Medicine and a hospital, students will develop the ability to accurately measure and analyze sporting performance.

### Nurturing and supporting top athletes

We use scientific coaching theory and the latest training methods to produce high-caliber athletes and trainers capable of flourishing in the sports world after graduation.

### Developing an in-depth and multifaceted perspective on health

Informed by the perspective of diversity, students gain a knowledge of the physical, psychological, and social aspects of health and cultivate the skills required to support people's health and well-being.

### Playing an active international role in sport-related organizations and industries

Fieldwork provides students with an understanding of sport-related management resources in the form of people, goods, money, and information, as well as enabling them to gain practical management abilities both within Japan and overseas.

## Career Paths after Graduation

SUPPORT  
1

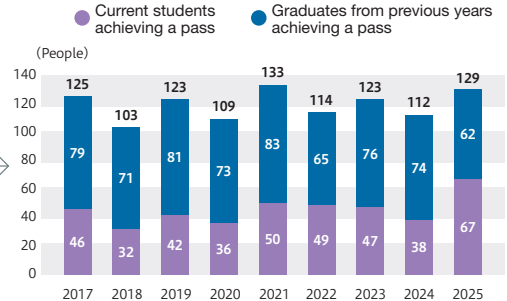
### Teaching

129 people

Number passing teacher employment examinations  
(Examinations for employment in the 2025 academic year)

Carrying on the tradition of “Juntendo in the Teaching Profession,” Juntendo saw 129 successful candidates (67 current students and 62 graduates) in the 2024 teacher employment examinations. Many Juntendo alumni play an active role in classrooms nationwide and quite a few students state that they chose Juntendo because one of their former teachers had studied here.

#### The Faculty of Health and Sports Science produces numerous teachers every year!



\*Current students achieving a pass include both those accepted to fill vacancies at public schools and those passing examinations for employment at private schools

SUPPORT  
2

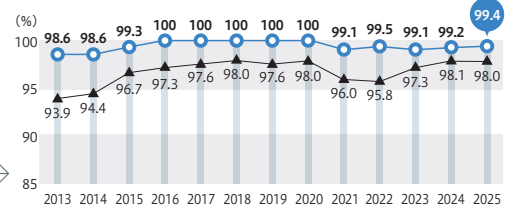
### Companies

99.4%

Corporate job offer rate  
(March 2025 graduates)

Through the meticulous coaching provided by the Career Office and close communication between students and faculty members, the faculty consistently maintains a hiring rate well above the national average.

#### A hiring rate above the national average!



○ Juntendo University: Number of applicants receiving corporate job offers / Number of applicants for corporate jobs (as of March 31, 2025)

▲ National average: From the Survey of Job Offers Received by Students Due to Graduate from Universities and Colleges conducted by the Ministry of Education, Culture, Sports, Science and Technology

SUPPORT  
3

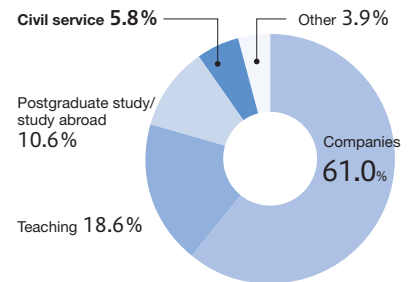
### Civil service

5.8%

Proportion of civil service positions among all graduate employment outcomes  
(March 2025 graduates)

Every year, many of our graduates take up civil service positions, including as police officers, firefighters, SDF officials, and local government employees.

#### Our graduates also become civil servants, including with the police, fire departments, SDF, and local government!



#### Main destinations of March 2025 graduates

**[Companies]** Iris Ohyama, Akita Northern Happinets, Acom, Adeka, Argo Graphics, Alpen, Aeon Retail, Ichijo, Ibaraki Sekisheim, Welcia Yakkyoku, Uchida Yoko, HIS, ANA Osaka Airport, ANA New Chitose Airport, NTT Data Japan, NTT Data Financial Technology, en Japan, Ota Oil, Otsuka Corporation, Open House Group, Kaga Electronics, Juntendo School Corporation, Kanematsu, KNT, Kusuri no Aoki, Grop, Keiyo Bank, GEO Holdings, JKA, Goldwin, Coca-Cola Bottlers Japan Vending, Kokubu Group, Konami Sports, Sato Pharmaceutical, Sunny Side Up Group, JR East Sports, Japan Squash Association, Columbia Sportswear Japan, Kobayashi Pharmaceutical, Sunny Side Up Group, The Shizuoka Bank, Shimamura, Joyo Bank, Shin Nippon Air Technologies, Sprix, SportsField, Smitomo Forestry, Sekisui House, Cerespo, Dai-ichi Life, Daiwa Securities, Daiwa House Industry, Chiba Bank, Tsukuba Bank, Tsuruha, Descente Japan, Tekken, Tokyu Construction, Tokyo Gas Communications, TOHO Cinemas, Tohoku Shinsha Film Coporation, Toyota Systems, Treasure Factory, NIPPUN, Nitori, Nichigas, Nojima, nobitel, BuySell Technologies, Fast Retailing, Philips Japan, Fujisoft, Fujifilm Medical, Fujiya, Fullcast Holdings, Mynavi, Misumi, Sumitomo Mitsui Baking Corporation, Mitsui & Co. Retail Group, Mitsui Fudosan Realty, Mitsubishi Estate Hotels & Resorts, Meiji Yasuda Life Insurance, The Yamanashi Chuo Bank, Leifras, Resona Bank, Litalico, Leverages, YKT, and more **[Teaching]** Numerous graduates employed by local governments nationwide as junior and senior high school health and physical education teachers, special needs school teachers, and elementary school teachers **[Civil Service]** Numerous graduates employed by local governments nationwide, especially the police forces and fire departments, including Kawasaki City Office, Sakura City Office, Tachikawa City Office, Chiba City Office, Tokyo Metropolitan Government Office, Tokyo High Court, Metropolitan Police Department, Kanagawa Prefectural Police, Chiba Prefectural Police, Hokkaido Prefectural Police, Chiba Fire Department, and Yokohama Fire Department **[Postgraduate Study/Study Abroad]** Juntendo University Graduate School of Health and Sports Science, Juntendo University Graduate School of Health Data Science, University of Tsukuba Graduate School, Tokyo Gakugei University Graduate School of Teacher Education Professional Degree Program, University of Teacher Education Fukuoka Graduate School Research Division of Education, Gunma College of Law and Business, Tokyo Kuretake Medical College, Tokyo Eisei Gakuen College, Nikken College of Health and Medical Care, University of Evansville **[Professional/Corporate Sports Teams]** Aioli Nissay Dowa Insurance, Aranmare Yamagata, Hakuohkai Medical Corporation Nagoya, Birth Clinic, Veertien MIE, Aim Service, NEC Red Rockets Kawasaki, Ehime Mandarin Pirates, Oita Trinita, RB Ormiya Ardija, Kubota Spears Osaka, Gunma Green Wings, Sagantosu, JX Advanced Metals, JEF United Ichihara Chiba, Shimano Racing Team, Sohgho, Daiso Industries, Toto Mtec, Toyota Boshoku, Japan Post Group, Fukushima Red Hopes, Miyazaki Prefecture Sports Association, LOCOK, Logisteed



# Faculty of Health Care and Nursing

The Faculty of Health Care and Nursing provides students wishing to become nurses, public health nurses, and midwives with the education required to graduate after four years and pass the relevant national examinations. Nursing education at Juntendo has a history dating back 126 years and seeks to maintain the tradition of holistic education cultivated over this period, while training nursing professionals who are highly intelligent, have a well-rounded education, and demonstrate compassion and humanity.

The faculty's educational philosophy focuses on nursing that heals the mind, not just the body. This is based on the spirit of the university motto *Jin* (benevolence), which means "I exist as you exist, with a heart that considers and cherishes others." More specifically, we respect the individuality of each and every person, with students and faculty members forging a close relationship through nursing education, extracurricular activities, and the like. We give consideration in the educational process to ensuring that you can enjoy an enriching student life.



## FACULTY DATA

[ As of May 1, 2025 ]

Degree available Bachelor of Nursing

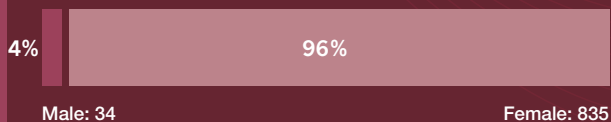
Number of members	Full-time faculty	67
	Planned enrollment capacity	220
	Students	869

Department Department of Nursing

### Qualifications available

- Eligibility to take the National Nurse Examination
- Eligibility to take the National Public Health Nurse Examination (optional; course open to all who choose to take it)
- Eligibility to take the National Midwifery Examination (open to selected students)
- Eligibility to become a health supervisor (upon application after qualifying as a public health nurse)
- Type 2 school nurse (upon application after qualifying as a public health nurse)

### Student gender balance



Campus Urayasu Campus

## Key Features of the Faculty

### Sending graduates into medical facilities for more than 100 years

Juntendo University provides holistic education guided by the philosophy of healing the mind, not just the body, based on the spirit of *jin* (benevolence), which means “a heart that always cherishes others and considers their feelings.” With a history and tradition dating back more than 120 years, the Juntendo style of nursing has been ceaselessly passed down through generations of students, winning tremendous trust and praise from patients and their families alike.



### National examination pass rate well above the national average!

The Faculty of Health Care and Nursing achieves high pass rates in national examinations to a degree rarely seen among other universities, with pass rates almost 10% higher than the national average in some cases. The faculty throws its full support behind students to ensure their success, with assistance including orientation sessions and supplementary classes to prepare for the examinations, mock examinations, and learning support provided by academic advisors.



### Most alumni who apply receive job offers from Juntendo University's 6 hospitals!

Every year, most alumni who apply receive job offers from the six hospitals affiliated to the Faculty of Medicine. In addition to supporting students who wish to work at medical institutions other than our affiliated hospitals and those who wish to find employment with local governments as public health nurses, we support those who wish to go on to postgraduate study to learn about more specialized nursing. As a result, all students decide on their subsequent career path before graduation.

### Graduate school with an ample range of certified nurse specialist courses!

The increasingly advanced, specialized nature of medical care means that more advanced nursing is also required. The Graduate School of Health Care and Nursing offers a well-developed master's program with courses tailored to the Certified Nurse Specialist and Certified Nurse Administrator qualification systems, as well as a doctoral program enabling students to gain more advanced research abilities. Thus, we have put in place an environment that enables students to further increase their expertise even after graduating from university.



## Studies at the Faculty of Health Care and Nursing

---

### Learn the knowledge and skills required by nurses and develop them into integrated practical nursing ability

The Department of Nursing offers a curriculum that ensures students master the basic abilities required in the nursing profession. Through subjects grouped together in stages tailored to the year of study, students gain the knowledge of liberal arts and physical health required by nurses, along with the knowledge and skills needed for nursing practice, and then learn how to develop them into integrated practical nursing ability. Academic advisors work closely with students to support them in formulating a study plan tailored to their future career path, objectives, and fields of interest.

Classes take a diverse array of forms, depending on their content, from joint lessons attended by 220 students to study in groups of 2-10. Furthermore, we provide opportunities for overseas training for those who wish to participate, in order to cultivate an international outlook and understanding of other cultures. Students also have the option of taking subjects that will qualify them to take national examinations to become public health nurses or midwives, while advanced specialist nursing subjects are available for students who wish to follow other career paths.

## Why Study Here?

---

### Qualify to take several national examinations for nursing professionals!

At the Faculty of Health Care and Nursing, students can qualify to take the National Nurse Examination and a number of other professional nursing examinations when they graduate.

- Eligible to take the National Nurse Examination
- Eligible to take the National Public Health Nurse Examination (all who choose to apply)
- Eligible to take the National Midwifery Examination (selective system, with around 10 students per year chosen)
- Eligible to become a class I health supervisor (upon application after qualifying as a public health nurse)
- Eligible to become a type 2 school nurse (upon application after qualifying as a public health nurse)

### Academic advisor system provides meticulous learning support!

A single member of the academic staff serves as advisor to around 10 students, providing them with meticulous advice about not only learning, but also future career paths, job-hunting, and student life.



### An ample range of clinical practicums at the Faculty of Medicine's 6 hospitals

An abundant array of clinical practicums is available at the Faculty of Medicine's six affiliated hospitals and many other facilities. The hospitals affiliated to the Faculty of Medicine carry out cutting-edge robotic surgery, care for 3,000 women in childbirth each year, and provide specialist medical care for elderly people. As such, clinical practicums at Juntendo University's hospitals give students the chance to steadily acquire practical skills that will be useful to them in their future medical facilities.

### Clinical practicums

Clinical practicums usually take place at five of the affiliated hospitals (the Shizuoka Hospital is excluded from the program). The objective of clinical practicums is to give students the opportunity to apply the basic knowledge and skills learned in lectures and clinical exercise, and to gain practical nursing skills. Practicums take place in each of the four years, increasing in quality and quantity as students move up through the years.

- Basic Nursing
- Child Health Nursing
- Maternal-Newborn Nursing
- Psychiatric Nursing
- Midwifery
- Gerontological Nursing
- Adult Nursing
- Home Care Nursing
- Public Health Nursing
- Integrated Nursing

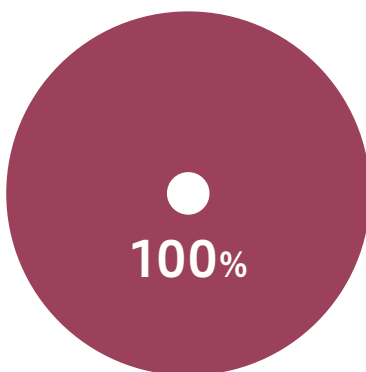
### Overseas training

The Faculty of Health Care and Nursing offers training in several other countries, including the UK, Thailand, and the U.S.A. For example, since the 2014 academic year, we have offered a 13-day language study and nursing training program at De Montfort University (DMU) in the UK. Open to students in the second and third years, this program provides an opportunity to participate in intensive English-language lectures, attend medical care and nursing lectures and clinical exercises with local nursing students, and come into contact with British communities and cultures through outreach activities.

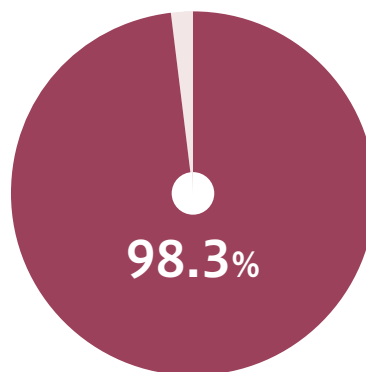
We have also set up a pre-departure interaction program enabling Juntendo nursing students to get to know DMU nursing students online, giving students the opportunity to improve their English communication skills and make friends in the UK. During the training program, students tackle various tasks involving everyday English conversation, medical English, and discussion, and give a presentation on their final day. Students gain valuable experience from coming into contact with British society and culture, and learning about nursing in the UK, which can help to enrich their subsequent student life, as well as enhancing their career prospects after graduation.

## Career Paths after Graduation

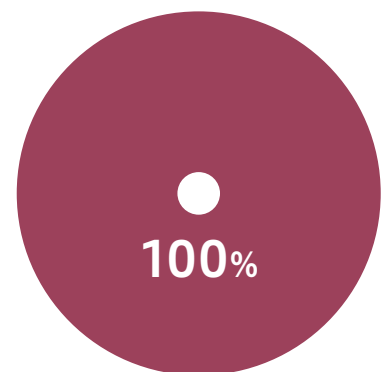
Pass rate in the  
National Nurse Examination  
(Published March 24, 2025)



Pass rate in the  
National Public Health Nurse  
Examination  
(Published March 24, 2025)



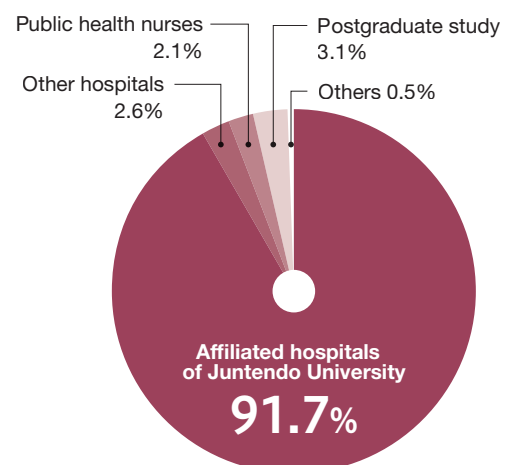
Pass rate in the  
National Midwifery Examination  
(Published March 24, 2025)



### Major career paths

After graduating, most alumni who apply receive job offers from the six hospitals affiliated to the Faculty of Medicine. Building up a career in various fields also opens up opportunities to play an active role as a certified nurse or certified nurse specialist. Those who go on to further study at the Graduate School of Health Care and Nursing can receive more advanced nursing education and research supervision.

Job offers received by  
graduating students  
(2024 academic year)





# Faculty of Health Science and Nursing

Amid the educational environment we have developed at our campus in Mishima City, Shizuoka Prefecture, excellent teaching staff with abundant experience both in education and clinical nursing provide the basic nursing education necessary to provide safer, more secure and higher quality nursing care. Clinical nursing placements mainly take place at Juntendo University Faculty of Medicine's Shizuoka Hospital, with clinical nursing lecturers also serving as practicum instructors in clinical settings, carefully coordinating education in practical nursing settings with classroom education to ensure that students can integrate smoothly into the field after graduation.



## FACULTY DATA

[ As of May 1, 2025 ]

Degree available Bachelor of Nursing

Department Department of Nursing

Student gender balance

9.3% 90.7%

Male: 55

Female: 534

Number of members	Full-time faculty	37
	Planned enrollment capacity	160
	Students	589

Qualifications available

Eligibility to take the National Nurse Examination

Eligibility to take the National Public Health Nurse Examination

Eligibility to become a class 1 health supervisor  
(upon application after qualifying as a public health nurse)

Type 2 school nurse (upon application after qualifying as a public health nurse)

Campus

Mishima Campus

## Key Features of the Faculty

### Curriculum

The faculty's four-year program nurtures a richness of spirit, while enabling students to systematically acquire the knowledge required to flourish as nursing professionals.

Upon graduation, all students are eligible to take the National Nurse Examination, while up to 130 are eligible to take the National Public Health Nurse Examination under a selective system. (This change took effect in April 2024)

### Practicums

A vast majority of graduating students are now employed in clinical practice as registered nurses after gaining a wealth of real-life experience through placements at medical institutions including Juntendo's Shizuoka Hospital.



### Teaching staff

Juntendo's experienced teaching staff, who have focused on medical and nursing care, will provide highly specialized education. They serve as strong allies for students who aspire to become nurses by providing advice on everything from strategies for national examinations to future career paths.

### Advisor system

Each faculty member is responsible for a small number of students, providing them with meticulous guidance and support for both learning and daily life. Students in each year are organized into groups of seven or so, and two academic advisors are assigned to provide advice and guidance about study, career options, and student life as a whole.

As a general rule, these advisors remain assigned to the same group throughout the students' four years at the university, to ensure consistency. Group social events also take place, enabling students to benefit from support based on interaction with students in other year groups.



## Studies at the Faculty of Health Science and Nursing

We aim to produce the next generation of nurses who are healthy both mentally and physically, and who can respond to diverse values and internationalism.

In the Faculty of Health Science and Nursing, students acquire the attitudes and skills required to become proficient nurses and public health nurses through a learning process based on an effective combination of lectures, practical classes, and clinical placements.

The curriculum also incorporates a wide range of liberal arts subjects, language studies, and physical education, in order to cultivate next-generation nursing professionals who are sound in mind and body, and capable of flexibly responding to diverse values and internationalization.



## Why Study Here?

### Steps that allow for a steady progression through the four-year learning process

The learning process is designed to enable students to progress smoothly and progressively from basic to more advanced content.

### An environment with cutting-edge equipment and instruments

Being able to study in a high-quality environment with the latest equipment is a major advantage for those pursuing a career in nursing. Practicums give students of this faculty the opportunity to come into contact with cutting-edge equipment and instruments, which will deepen their understanding of more advanced medical technology.

### Clinical placements forming a solid core for a career as a nursing professional

Clinical placements are incorporated into the curriculum from the very first year of study. Students are placed in a variety of public health, medical care, and welfare settings, including hospitals, health centers, nursery schools, home nursing stations, and industrial health management offices.

### English I

As part of the university's globalization policy, our English education aims to ensure students improve their TOEFL scores, which has been currently adopted by 130 countries around the world and is truly a global standard. We hope that you will take up the challenge of acquiring world-class English when you enter our university.

### Integrated clinical placement for comprehensive community care

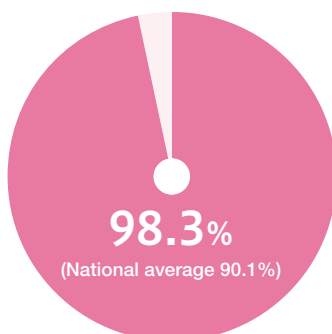
This clinical placement represents the culmination of your four years of study. Advised by your supervising instructor, you will identify contemporary topics and issues in nursing and health science in your chosen realm, and then study them in a self-directed, systematic manner, taking into account the goals of your practicum in that field and the situation at the facility where your clinical placement is taking place. You will aim to improve your practical nursing skills by synthesizing all the knowledge, skills, and attitudes you have acquired over the four years of study.

## Career Paths after Graduation

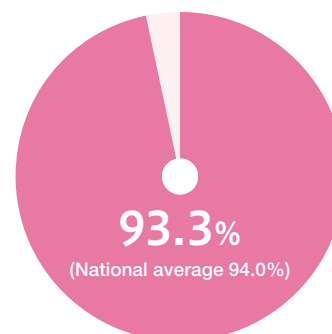
The faculty boasts a high employment rate at the six hospitals affiliated to Juntendo University's Faculty of Medicine and other nursing institutions both within Shizuoka Prefecture and elsewhere.

The faculty has a system designed to provide students with support in determining their post-graduation career paths.

**Pass rate in the  
National Nurse Examination**  
(Published March 24, 2025)



**Pass rate in the  
National Public Health Nurse Examination**  
(Published March 24, 2025)





# Faculty of International Liberal Arts

Through a curriculum designed to cultivate the high level of communication skills and liberal arts education required to play a wide-ranging role in the international community, the Faculty of International Liberal Arts aims to cultivate global citizens, capable of taking the initiative, coexisting in harmony with those around them, and demonstrating autonomy amid diverse values. Students can acquire the global health knowledge built up by Juntendo University over the years, as well as developing proficiency in intercultural communication.



## FACULTY DATA

[ As of May 1, 2025 ]

Degree available Bachelor of International Liberal Arts

Department Department of International Liberal Arts

Student gender balance



Male: 447

Female: 503

Number of members	Full-time faculty	37
	Planned enrollment capacity	240
	Students	950

Qualifications available

- Type I junior high school teaching certificate (English)
- Type I high school teaching certificate (English)
- Eligible to be appointed as a social welfare officer
- Certified social researcher

Campus Hongo-Ochanomizu Campus

## Key Features of the Faculty

---

### Specialist education in the up-and-coming field of global health

From their third year, students of this faculty can select a field of specialism according to their interests and preferred career path, choosing between the realms of Global Society, Intercultural Communication, and Global Health Service. This is currently the only faculty in Japan offering an undergraduate program in global health.

### Small-group foreign language classes that cultivate true proficiency

Foreign language education is conducted on the basis of cooperative learning in small classes divided into even smaller groups. Exchanging opinions with other students in a different language steadily fosters the ability to listen and communicate one's message. Another key feature of this faculty is our introduction of plurilingualism, under which students also learn another foreign language—choosing from Spanish, French, and Chinese—in addition to English.

### Ample careers education to support you in achieving your dreams

To provide employment and career development support for students who aspire to spread their wings across a wider stage as global citizens, this faculty offers careers education with the following six features.

- (1) Support for finding employment that starts from the first year of study
- (2) A wealth of careers education subjects and opportunities to meet many professionals
- (3) Highly experienced faculty members in charge of careers education
- (4) Career support for students based on collaboration among all faculty members
- (5) Individual career path consultation sessions with nationally certified career consultants
- (6) A full range of activities to support students in finding employment

## Studies at the Faculty of International Liberal Arts

---

### Laying the foundations, deepening knowledge, and enhancing international competence

Over the first two years after enrollment, students gain an overall understanding of international liberal arts, while learning basic concepts and skills required for study.

In the third and fourth years, students build on those foundations, gaining deeper knowledge tailored to their individual interests and career plans, and also work to enhance their

### Location and environment promoting a broader global outlook

Home to many leading universities, the Ochanomizu and Suidobashi area of Tokyo where our campus is located has long been a student quarter, but it also has a wealth of attractions and notable sites popular with international tourists. As a magnet for students, businesspeople and sightseers from other countries, the area offers many opportunities to gain a global outlook and cross-cultural experience.

### Faculty body with abundant experience and achievements

Classes are taught by faculty members with a rich career background and record of achievement in fields related to globalism, intercultural communication, and global health, among others. These diverse specialist fields include medical and health care, languages and communication, translation and interpreting, and support for developing countries.

### A university is a venue for both education and research

As a university is a venue for both education and research, the findings from new research become the cornerstone of better education. Unique in offering class subjects in such areas as health and sports, the Faculty of International Liberal Arts is staffed by lecturers who all freely publish the results of their research and disseminate their findings widely to academic societies, the education community, and society as a whole. Every year, the faculty publishes the Juntendo Journal of Global Studies, in the hope that mutually thought-provoking exchanges of opinions among academic staff and researchers with diverse fields of expertise across the humanities and sciences will produce fresh knowledge that transcends the boundaries between disciplines. This journal also carries the abstracts of graduation theses produced by fourth-year undergraduates that have been nominated by their seminar supervisors.

international competence. With an emphasis on small-group learning, which is essential to liberal arts education, all full-time members of this faculty teach the first-year practical subjects Liberal Arts Seminar I and II, which then feed in to the practical subjects Global Citizenship Exercise (Basic) in the third year and Global Citizenship Exercise (Development) in the fourth.

## Why Study Here?

### A language study center offering everything from advice to self-study options

For the sole use of those belonging to this faculty, the language study center supports students in undertaking independent language study. Students can freely seek advice from teachers at the permanently staffed counseling booths or exchange opinions and engage in debate with teachers and friends in the relaxed atmosphere of the open space. The center is equipped with a wealth of resources, including computers for e-learning, movies on DVD, CDs, books, and English-language newspapers, and also has individual booths where students can use audio materials and online resources to practice their listening skills. With a dedicated area for practicing presentations as well, the center offers an environment conducive to effective foreign language study.



### Teacher training programs for those who aspire to become English teachers with a background in international liberal arts

Amid the march of globalization, the role of English teachers is becoming very important. The Faculty of International Liberal Arts has a teacher training curriculum enabling students to gain type I junior high school and high school teaching certificates with English as their specialism. Offering a good balance between theory taught in the classroom and practice through teaching practicums, the curriculum cultivates the practical teaching skills required as an educator. The teacher training program at this faculty will enable students to become English teachers equipped not only with English language skills, but also a wide-ranging knowledge of the cultural background to the language and other aspects of international liberal arts.



### UNHCR Refugee Film Festival Partners

The Office of the United Nations High Commissioner for Refugees (UNHCR), which is an agency of the United Nations, protects and supports refugees around the world, as well as undertaking initiatives aimed at resolving refugee issues. As a university partner of the UNHCR, Juntendo University screens films about refugees every year in the form of extension courses that those outside the university can also attend. Prepared and run by a steering committee consisting of students, staff, and faculty members, the screenings are followed by student-led programs aimed at taking a step forward in supporting refugees. These programs offer participants from the university and members of the public the chance to come together to empathize with the heartache experienced by refugees and consider what they themselves can do as members of the global community.

### International joint courses where students with different native languages and cultural backgrounds learn together

The faculty curriculum offers a number of subjects within the international joint courses subject group, where exchange students from other countries study alongside undergraduates from the Faculty of International Liberal Arts. This provides students who have different native languages and cultural backgrounds with the opportunity for intellectual exchange via the lingua franca of English.

While taking academic courses in Japanese language, culture, and traditions, exchange students from China's Henan Normal University and France's Institut national des langues et civilisations orientales (Inalco) continue to engage in meaningful interaction with this faculty's students via the buddy system, both in class and outside it. The faculty also hosts at least 10 short-term international students from the National University of Singapore every year.

## Overseas Training and Study Abroad

### A diverse array of overseas training programs accommodating different objectives and location preferences

The faculty offers an abundant array of training programs tailored to students' interests, enabling them to acquire linguistic ability through the faculty's foreign language education curriculum, as well as further extending their language skills overseas, and providing them with valuable experiences that can only be gained in other countries. These training programs take place in a variety of locations, encompassing North America, Europe, Oceania, and Asia, while their content ranges from courses aimed at improving linguistic ability to fieldwork relating to global health, in which participants learn about such topics as primary care, community health, and global health, incorporating visits to areas and facilities that would not be available to students traveling as ordinary tourists. Each student chooses their program according to their interests, enabling them to experience the lifestyle of their destination first hand while studying that country's culture and history in greater depth, thereby providing them with a more profound understanding of other cultures and a broader global outlook.

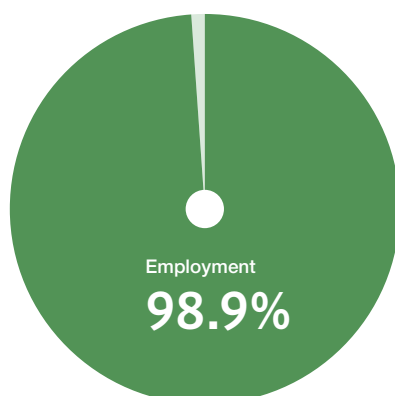
Country	Host Institution	Program Name
Thailand	Mahidol University	Global Health Short Course
Indonesia		Short-term intercultural course in Indonesia
Taiwan	National Taiwan Normal University	Short-term Chinese course
Canada	University of British Columbia	Short-term global experience program
Spain	University of Salamanca	Short-term Spanish course
China	Dalian University of Technology	Short-term Chinese course
	Henan Normal University	International exchange program
U.S.A.	University of Hawai'i at Manoa	Hawai'i English Language Program (HELP)
	University of California, Irvine	Special study abroad program
Finland	JAMK University of Applied Sciences	Cross Cultural Management Program
Australia	Western Sydney University	Short-term course in English and health promotion, short-term English course
Singapore	National University of Singapore	Short-term global health program in Singapore
Philippines	Language schools (e.g. First English, CPILS)	Short-term English course in Cebu
	Cebu Province (various locations)	Global English in Action (practical course focused on identifying issues)
France	Language school (French in Normandy)	Short-term French language and culture course
	Institut national des langues et civilisations orientales	International exchange program
	French high schools	Japanese Language and Culture Teaching Assistant Project
South Korea	Konkuk University	International training program
Cambodia		SDGs field study
New Zealand	Lincoln University	Short-term English course

## Career Paths after Graduation

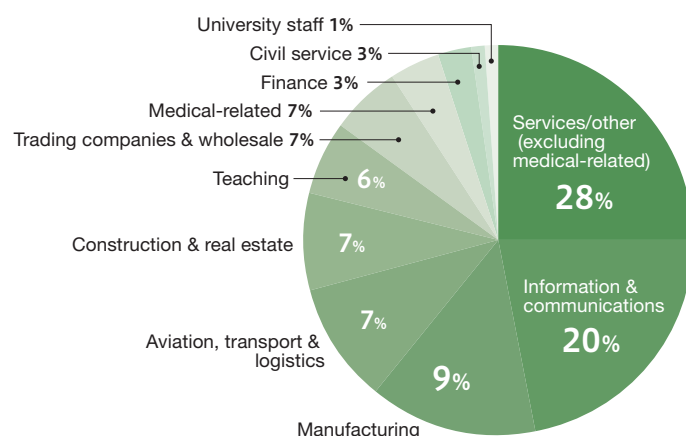
### 98.9% employment rate, with 14 students progressing to graduate school and 13 becoming English teachers

The entire faculty supports students in shaping their future career. Careers education subjects are offered in each year of study, with students receiving intensive careers guidance on multiple occasions before graduation. In addition, the faculty holds weekly job search support events open to students in all years of study, offers individual consultation sessions with career counselors, and provides careers support based on academic-industrial partnerships, such as events at which students can meet human resource managers from various companies. Other initiatives include Career Support Center visits to seminar classes and interviews with all third-year students, on-campus events focused on job-hunting and ways to promote oneself, several social events per year that offer current students the chance to meet alumni, and a weekly careers newsletter.

**Employment rate**  
(companies, civil service, teaching)  
(number hired / number seeking employment)



**Major career paths**





# Faculty of Health Science

Working closely with Juntendo University Hospital and the university's other hospitals, the Faculty of Health Science offers students the chance to gain experience in an environment equipped with the latest facilities for providing highly advanced medical care, ensuring that they acquire sound technical skills and a high level of practical competence.

Abundantly experienced faculty members provide meticulous support tailored to each individual student's preferred career path. This faculty cultivates physical therapists and radiological technologists with advanced expertise and skills, who will be able to flourish in a diverse array of fields.



## FACULTY DATA

[ As of May 1, 2025 ]

Degrees available  
 Department of Physical Therapy: Bachelor of Science in Physical Therapy  
 Department of Radiological Technology: Bachelor of Science in Radiological Technology

Departments  
 Department of Physical Therapy  
 Department of Radiological Technology

Student gender balance



Number of members	Full-time faculty	40
	Planned enrollment capacity	240
	Students	976

Qualifications available  
 Department of Physical Therapy  
 • Eligibility to take the National Examination for Physical Therapists (MHLW)\*  
 Department of Radiological Technology  
 • Eligibility to take the National Examination for Radiological Technologists (MHLW)\*  
 • Radiation protection supervisor (Nuclear Regulation Authority)

\*Ministry of Health, Labour and Welfare

Campus  
 Hongo-Ochanomizu Campus

## Key Features of the Faculty

---

### Study at Juntendo University's core campus

The Faculty of Health Science is located at the Hongo-Ochanomizu Campus, Juntendo University's core campus. It cultivates physical therapists and radiological technologists with advanced expertise and skills, who will be able to flourish in a diverse array of fields.

### Close ties to affiliated hospitals

The faculty works closely with the rehabilitation and radiology departments at Juntendo University Hospital and the other hospitals affiliated to the Faculty of Medicine. Building up experience in an entirely new environment, students will gain sound technical skills and a high level of practical competence.

### Fulfilling educational environment equipped with the latest facilities

As institutions providing highly advanced medical care, the university's hospitals are equipped with the latest facilities. Lectures, practical classes, and practicums take place in an advanced educational environment, drawing upon the abundant fruits of research conducted at the university's hospitals.

### Well-developed education and leadership systems led by highly experienced faculty members

Faculty members with advanced knowledge and a wealth of clinical experience provide finely tuned support tailored to each individual student's preferred career path. Their meticulous guidance is designed to ensure that students graduate after four years and go straight on to pass the relevant national examination.

### Internationalization and cultivation of personnel with a global outlook through partner universities overseas

To facilitate international exchange, Juntendo University has concluded partnership agreements with many universities overseas. Through exchange and cooperation with these overseas partner universities, this faculty cultivates individuals who are highly intelligent, have a well-rounded education and a global outlook, and who are capable of speaking up and taking action.

### Physical therapy and radiological technology studies linked by sportology

Taking sportology as the common thread linking physical therapy and radiological technology studies, this faculty nurtures individuals capable of making a contribution to everything from the early detection and diagnosis of injuries and disease to ensuring a swift recovery.

\*Sportology: An academic discipline newly defined by Juntendo, aimed at adopting a scientific approach to the links between sport, medicine, and health.

## Why Study in the Department of Physical Therapy?

---

We aim to cultivate highly skilled physical therapists with the qualities required to provide whole-body management in an age in which medical technology is becoming increasingly advanced and diverse.

### Collaborative structure

The collaborative teaching structure is one of Juntendo's distinctive features, with physical therapists working at the university's hospitals taking charge of instruction in practicums, while the department's faculty members also undertake clinical duties at the hospitals.



### Faculty members hone their skills on the front line of medical care

All faculty members also undertake clinical duties at Juntendo University Hospital. By creating opportunities for faculty members who understand each individual student's personality and qualities to provide face-to-face guidance, we reduce the risk of mismatches in practicum placements and help to ensure that knowledge and skills become firmly established.



### Substantial specialist basic medical education provided by lecturers from the Faculty of Medicine

A knowledge of basic medical science is crucial to gaining a deeper understanding of physical therapy. Students receive the same anatomy and physiology classes as students at the Faculty of Medicine and share that faculty's practical rooms. Classes provided by front-line lecturers from the Faculty of Medicine will doubtless become memories that last a lifetime.



## Why Study in the Department of Radiological Technology?

We cultivate radiological technologists capable of flourishing across the board in departments of diagnostic radiology, nuclear medicine, and radiotherapy.

### A solid framework for cooperation between department members and radiological technologists

The full-time teaching staff of this department and radiological technologists cooperate with each other in an effort to ensure smooth curriculum management. Thanks to the close proximity of faculty classrooms and practical rooms to the university's hospital, students will acquire the very latest knowledge in the field of radiology.



### Taught by medical professionals with a wealth of clinical experience

Our full-time academic staff includes physicians and radiological technologists with a wealth of clinical experience and a solid record of achievement in education and research. They also provide medical care at the university's hospitals, enabling them to lay the foundations for education in team-based medicine and provide each individual student with meticulous guidance.

### Education with internationalization in mind

Students will increasingly encounter patients from overseas in the future. As radiological technologists often need to talk directly to patients and have physical contact with them, we cultivate individuals equipped with a global outlook, international competence, and communication skills.

## Faculty of Health Science      Shared Learning

---

### Anatomy I and Anatomy Practice I (Department of Physical Therapy), Anatomy and Anatomical Exercises (Department of Radiological Technology)

As both physical therapists and radiological technologists are medical professionals, it is vital that they fully understand the structures and functions of the human body. Among its full-time academic staff, the Faculty of Health Science has lecturers who for many years have been responsible for providing anatomy education in Juntendo's Faculty of Medicine. Through classroom lessons, practical classes, and experiments, they educate and instruct students about the skeleton, joints, and muscles that allow the human body to move, as well as about the various organs that maintain life.

### Emergency Medicine (Department of Physical Therapy / Department of Radiological Technology)

Emergency Medicine is a compulsory subject for first-year students in the Faculty of Health Science. Emergency Medicine classes are taught by front-line members of Juntendo's Faculty of Medicine and include practical elements such as instruction in the use of AEDs. These lessons provide students with an understanding of appropriate emergency medical care techniques and their importance, enabling them to gain the basic knowledge they will require as medical professionals.

## Career Paths after Graduation

---

At the Faculty of Health Science, highly experienced faculty members provide each and every student with meticulously tailored education and instruction. This ensures that students are equipped with sound attitudes and practical skills, as well as the ability to continue their learning independently, thereby enabling them to gain the following qualifications and pursue the career paths below in the future.

### Department of Physical Therapy

#### Qualifications available

Eligibility to take the National Examination for Physical Therapists (MHLW)

#### Career paths after graduation

Employment at hospitals, clinics, or other medical facilities, facilities involved with sports rehabilitation, welfare facilities, or companies in the medical field, or further study at graduate school in Japan or overseas

### Department of Radiological Technology

#### Qualifications available

Eligibility to take the National Examination for Radiological Technologists (MHLW)  
Radiation protection supervisor (Nuclear Regulation Authority)

#### Career paths after graduation

Employment at hospitals, diagnostic laboratories, health screening centers, or companies in the medical field, or further study at graduate school in Japan or overseas



# Faculty of Medical Science

Opened in April 2022, the Faculty of Medical Science is Juntendo University's seventh undergraduate faculty. It cultivates clinical laboratory technologists, who are specialists in the laboratory testing used to reach a definitive diagnosis, and clinical engineers, the engineers who protect lives by ensuring the safety of medical care.

Meticulous instruction tailored to each individual student is provided by a faculty team equipped with a wealth of clinical experience and advanced research ability. The faculty is based at the Urayasu-Hinode Campus in Chiba Prefecture, Juntendo University's newest campus. In the course of practical classes using the testing equipment and other devices actually used in clinical practice, you will be able to learn about state-of-the-art medical care and master practical skills that you can draw upon in the field.



## FACULTY DATA

[ As of May 1, 2025 ]

**Degrees available** Department of Clinical Laboratory Technology:  
Bachelor of Science in Clinical Laboratory Technology  
Department of Clinical Engineering:  
Bachelor of Science in Clinical Engineering

**Departments** Department of Clinical Laboratory Technology  
Department of Clinical Engineering

**Student gender balance**



Male: 180

Female: 563

**Number of members** Full-time faculty 27  
Planned enrollment capacity 180  
Students 743

**Qualifications available** Department of Clinical Laboratory Technology  
Eligibility to take the National Examination for Clinical Laboratory Technologists (MHLW)\*  
Department of Clinical Engineering  
Eligibility to take the National Examination for Clinical Engineers (MHLW)\*

\* Ministry of Health, Labour and Welfare

**Campus**

Urayasu-Hinode Campus

## Key Features of the Faculty

---

### Experience and achievements in nurturing health care professionals since the university's founding

Over the many years since its founding, Juntendo University has amassed a great deal of experience and achievements in nurturing health care professionals. This faculty provides education in collaboration with the Faculty of Medicine and other medical-related faculties.

### Fostering the next generation of leaders with international perspectives

Clinical laboratory technologists and clinical engineers are needed more than ever and are expected to play an active role. By providing the enhanced foreign language education required to succeed in the age of globalization, this faculty aims to foster the next generation of leaders with international perspectives, who will be capable of making a useful contribution, no matter how times may change.

### Learning from a faculty team with abundant clinical experience

You will learn specialist knowledge and medical technology from a faculty team with a wealth of clinical experience, backed up by the unparalleled clinical capabilities of Juntendo's Faculty of Medicine and its affiliated hospitals.



### Able to provide cutting-edge medical education

Across its six affiliated hospitals, Juntendo has a total of 3,589 beds, one of the largest of any Japanese medical school. Each hospital is developing high levels of expertise to meet wide-ranging medical needs in such areas as advanced medical care, community medicine, emergency medicine, perinatal care, geriatrics, psychiatric care, and cancer treatment. As faculty lectures and practical training sessions at the university draw upon the abundant research output amassed by Juntendo, you will gain cutting-edge knowledge, as well as practical experience of clinical settings.

### Clinical placement and training centered around university hospitals

We strive to ensure consistency between lectures and training, with clinical placement and training centered around five hospitals affiliated to the Faculty of Medicine, other hospitals with links to the Faculty of Medicine, and hospitals and facilities run by Juntendo alumni. Most notably, like the campus where this faculty is based, the Faculty of Medicine's affiliated Urayasu Hospital is located in Urayasu City; close collaboration between them enables students to master more specialist knowledge and skills.

### Educational environment enhancing internationality

Ample foreign language education and overseas training programs help to cultivate specialists capable of spreading their wings on the international stage.

## Why Study in the Department of Clinical Laboratory Technology?

---

### Education instilling practical skills in partnership with other medical-focused faculties

After gaining basic knowledge from liberal arts and basic medical education courses, you will gradually step up to studying specialist knowledge and practical skills. In addition, the department works with the Faculty of Medicine and other medical-focused faculties to deliver a curriculum that will ensure you gain an in-depth understanding of the field by means of a phased approach throughout the four-year program.

### Furnished with an ample array of testing equipment and other devices actually used in clinical practice

The campus is fully equipped with the facilities required to study state-of-the-art medical care, including practical rooms for conducting physiological function tests and laboratory tests, and also has an ample array of medical devices and equipment, along with testing equipment. As these are the same items actually used in clinical practice, classes and practicums will provide you with practical skills that can be put to use in front-line settings.

## Why Study in the Department of Clinical Engineering?

### A curriculum providing a good balance of medical science and engineering studies

Medical subjects are taught in partnership with other medical-focused faculties, enabling students to receive a substantial education in medical science. In the case of engineering subjects, the faculty team boasts a solid track record of education and research in the fields of medical engineering and artificial organs, ensuring that students can master the requisite engineering knowledge and skills.



### A fulfilling learning and research environment

The department is fully equipped with the hi-tech medical devices actually used in clinical practice, including dialysis machines, heart-lung machines, and extracorporeal circulation machines such as ECMO devices. Classes are conducted in small groups and provide meticulous instruction tailored to each individual student, ensuring that you can master practical skills needed in clinical settings. Third- and fourth-year students take the Graduation Research I and II subjects, in which you will put together the findings from your research and produce your graduation thesis. At Urayasu-Hinode, Juntendo's newest campus, you will be able to conduct experiments and research using our practical rooms and preparation rooms.



## Career Paths after Graduation

At the Faculty of Medical Science, highly experienced faculty members provide each and every student with meticulously tailored education and instruction. This ensures that students are equipped with sound attitudes and practical skills, as well as the ability to continue their learning independently, thereby enabling them to gain the following qualifications and pursue the career paths below in the future.

### Department of Clinical Laboratory Technology

#### Qualifications available

Eligibility to take the National Examination for Clinical Laboratory Technologists (MHLW)

#### Career Paths after Graduation

Employment at hospitals, clinics, health screening centers, registered clinical laboratories, medical device manufacturers, pharmaceutical companies, or research institutions, or further study at graduate school

### Department of Clinical Engineering

#### Qualifications available

Eligibility to take the National Examination for Clinical Engineers (MHLW)

#### Career Paths after Graduation

Employment at hospitals, companies and organizations in the medical device field, education and research institutions, or further study at graduate school



# Faculty of Health Data Science

Big data, AI health care, networks, cybersecurity. Opened in April 2023, the Faculty of Health Data Science is Juntendo University's eighth undergraduate faculty. Since its founding in 1838, Juntendo has contributed to human resource development and progress in the fields of medical science, medical care, and sport in Japan. In addition to this ample track record, the university can boast expertise in each field, and a huge volume of data gathered in the field. This faculty cultivates specialists in health data science who will contribute to the development of the realms of health, medical care, and sport. In doing so, they will bring to bear perspectives on health rooted in medical science, medical care, and sport that Juntendo University can offer precisely because of its aspiration to be a comprehensive health university and graduate school.



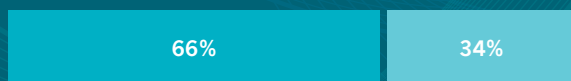
## FACULTY DATA

[ As of May 1, 2025 ]

Degree available Bachelor of Science in Health Data Science

Department Department of Health Data Science

Student gender balance



Number of members	Full-time faculty	26
	Planned enrollment capacity	100
	Students	316

Male: 210

Female: 106

Campus

Urayasu-Hinode Campus

## Key Features of the Faculty

---

### Studies enabling each student's individual interests and aspirations to serve as research topics

Data science is a tool. At the Faculty of Health Data Science, you will gain specialist skills in two fields with highly promising future prospects—health and data science—by means of a solid education in computing and mathematical statistics underpinned by engineering science.

### [Medical care & health × data science]

Recent advances in IT in the medical care field have raised hopes for the identification of various issues and the development of new solutions by harnessing real-world data—that is to say, medical data obtained from everyday health care activities. Juntendo University holds a vast quantity of data amassed over many years through the health care activities of the hospitals affiliated to its Faculty of Medicine, among others. Through lectures and practical classes, the Faculty of Health Data Science instills in students the data analysis skills required to make use of this living data and cultivates personnel capable of contributing to problem solving in the fields of medical care and health.

### [Sport × data science]

The use of data science in the world of sport has been expanding rapidly in recent years. Hopes are high for its use not only in analyzing match outcomes and strategic support, but also in promoting sportspeople's return to activity following injury. In addition, data science serves as the foundations for efforts to use artificial intelligence (AI) in sport-related industry and the health care industry to create various businesses and services. At Juntendo University, you can gain data analysis skills applicable to the field of sport, using data on an abundant array of sports accumulated through the activities of the Faculty of Health and Sports Science.

### Specialists in various fields foster health data scientists

All the lecturers teaching at this faculty are specialists in fields including computer science, mathematical statistics, AI data science (health and medical care data science and sport data science), and cybersecurity. One could go so far as to say that it is precisely because of Juntendo University's standing that it has been able to secure a top-class faculty team to give lectures.

## Why Study in the Department of Health Data Science?

---

### A curriculum that cultivates practical skills, from basic knowledge to cutting-edge studies

After gaining wide-ranging knowledge and a more profound liberal arts education through liberal arts and basic specialized courses in the first year, students in their second year take specialist lectures in each field to acquire a basic knowledge of data analysis in the form of mathematical statistics and computer science, along with basic knowledge in the realms of health, medical care, and sport.

From the third year, students gain more advanced expertise in the areas of applied computer science and mathematical statistics, AI and data science, and cybersecurity, tailored to their interests and planned career path.

Moreover, through internships at the university's affiliated hospitals and assorted companies, along with classes by practitioner-teachers, students gain practical skills focused on real-life issues. Furthermore, by incorporating learning in partnership with Juntendo's Faculty of Medicine and Faculty of Health and Sports Science, this faculty has identified the qualities required of a health data scientist working in the field and will cultivate work-ready personnel capable of playing an active role.



## Faculty of Health Data Science Mathematics, Data Science, and AI Education Program Initiatives

Since the 2022 academic year, Juntendo University has been implementing a mathematics, data science, and AI education program for all students, which was accredited at the literacy level by the Ministry of Education, Culture, Sports, Science and Technology in August 2023 (accreditation valid until March 31, 2028).

This program aims to teach students basic knowledge and skills relating to data science and AI, as well as nurturing their ability to make use of what they have learned in real life. Rather than merely cultivating an understanding of data science and AI as a user, this program fosters practical skills that enable students to gain new insights by blending the data science and AI technologies and approaches they have learned with their own areas of specialization. While leveraging existing classes on information science and statistics, the program also offers on-demand video-based teaching materials on the basics of data science, which are designed to blend seamlessly with these lessons. The content covered by the program encompasses the

fundamentals of data science and AI, their usage, technologies, the research ethics required when utilizing data, the protection of personal information, and security. Students also learn about ways of looking at, explaining, and handling data, which form the cornerstone of statistical science.

In August 2025, the Faculty of Health Data Science also received accreditation at the applied basic level (accreditation valid until March 31, 2030). The program is designed to enable students to systematically master three elements while progressively following the literacy level curriculum: Data Representation and Algorithms, Fundamentals of AI and Data Science, and AI and Data Science in Practice. In particular, the program places considerable emphasis on cultivating practical usage skills coordinated with Juntendo University's distinctive fields of expertise, including medical care, public health, sports, and health care. Through these initiatives, we aim to develop personnel equipped with the problem-solving skills and ethical perspective needed in our rapidly advancing digital society.

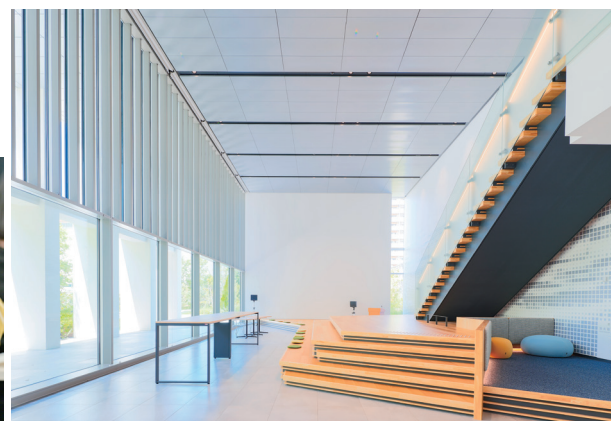
## Career Paths after Graduation

**The spheres of activity open to health data scientists are almost unlimited.**

After graduating from this faculty, the horizons of your future as a health data scientist equipped with specialist knowledge of both health and data science will be virtually unbounded. Competition to secure data scientists is already underway worldwide and data science holds hidden potential for further expansion in the future, as it can be applied to a wide range of realms within the fields of health, medical care, and sport, all of which help to support people's daily lives and health.

In addition to the possibilities for finding employment at

medical institutions, pharmaceutical companies, and manufacturers in the fields of products related to medical care, health, and sport, you could play an active role as a specialist in responding to the age of digital innovation, handling such matters as data management, analysis, and use, and planning in health, medical care, and sport-related departments of sporting governing bodies, companies, local governments, and think-tanks.





# Faculty of Pharmacy

Opened in April 2024, the Faculty of Pharmacy is Juntendo University's ninth undergraduate faculty.

Juntendo's strength lies in its clinical capabilities. The Faculty of Pharmacy provides pharmacy education that taps into the six diverse hospitals affiliated to the Faculty of Medicine, and upholds the traditions of Juntendo's 185 years of providing medical and health care education based on the spirit of *Jin* (benevolence). Through this education, the faculty contributes to society by cultivating pharmacists and pharmacy researchers with a high level of clinical competence—that is to say, true pharmacy professionals.

Based on a collaborative framework that draws upon all of Juntendo's resources, the Faculty of Pharmacy offers students powerful support tailored to their level of study and understanding, and provides them with the education required to graduate after six years and immediately pass the National Examination for Pharmacists.



## FACULTY DATA

[ As of May 1, 2025 ]

Degree available Bachelor of Pharmacy

Department Department of Pharmacy

Student gender balance

26%

74%

Male: 97

Female: 271

Number of members	Full-time faculty	42
	Planned enrollment capacity	180
	Students	368

Qualifications available Eligibility to take the National Examination for Pharmacists  
Other

Campus Urayasu-Hinode Campus

## Key Features of the Faculty

---

### Leveraging Juntendo's clinical capabilities to cultivate true pharmacy professionals

Over almost two centuries since first opening its doors, Juntendo has provided holistic education designed to cultivate personnel equipped with a high level of clinical ability, who are proficient in the practice of medicine, health, and welfare, based on an understanding of not only the bodies, but also the minds of people who are unwell, their family members, and even healthy individuals. The Faculty of Pharmacy cultivates

pharmacists who can make appropriate use of pharmaceuticals and health-related functional materials to help both sick and healthy people in our globalized society, and researchers capable of developing pharmaceuticals and health-related functional materials that meet social needs. In doing so, it works closely with the Faculty of Medicine and the Faculty of Health Care and Nursing, among other faculties, based on Juntendo University's traditional policy of holistic medical education.

## Studies at the Faculty of Pharmacy

---

### Collaborative multidisciplinary education that only a comprehensive health university can offer

Juntendo University is a comprehensive health university that currently has nine undergraduate faculties, including its Faculty of Medicine. Among those studying here are not only students who will go on to become physicians and nurses, but also those who will play active roles as medical professionals in a diverse array of fields, including rehabilitation and sport. At the Faculty of Pharmacy, you will study alongside students from other faculties who also aspire to become medical professionals, just like you, and will gain the ability to carry out your function as a pharmacist in team-based medicine.

In particular, education in partnership with the Faculty of Medicine and Faculty of Health Care and Nursing will provide you with an understanding of everything from healthy states to states of unwellness, systematically teach you drug therapies tailored to each, and equip you with the latest high-level clinical practice capabilities through experience of a diverse range of clinical settings.

### State-of-the-art advanced medical education

Juntendo University has six affiliated hospitals, more than almost any other Japanese medical school.

Each provides sophisticated, state-of-the-art medical care and is equipped with distinctive functions, including advanced medical care, emergency medicine, perinatal care, geriatrics, psychiatric care, and cancer treatment. In hospitals with a high level of expertise, you will receive wide-ranging clinical practice education spanning everything from dispensing and drug administration guidance to community medicine.

### Practical medical pharmacy research blending basic and clinical research

Starting from your first year, you will be provided with an educational environment furnished with veteran lecturers who boast abundant experience in a variety of fields. From faculty members who undertake advanced research you will learn the mindset required for pharmacy research, as well as being able to gain first-hand experience of the ongoing development of practical research based on outstanding expertise in the field of pharmaceutical sciences.



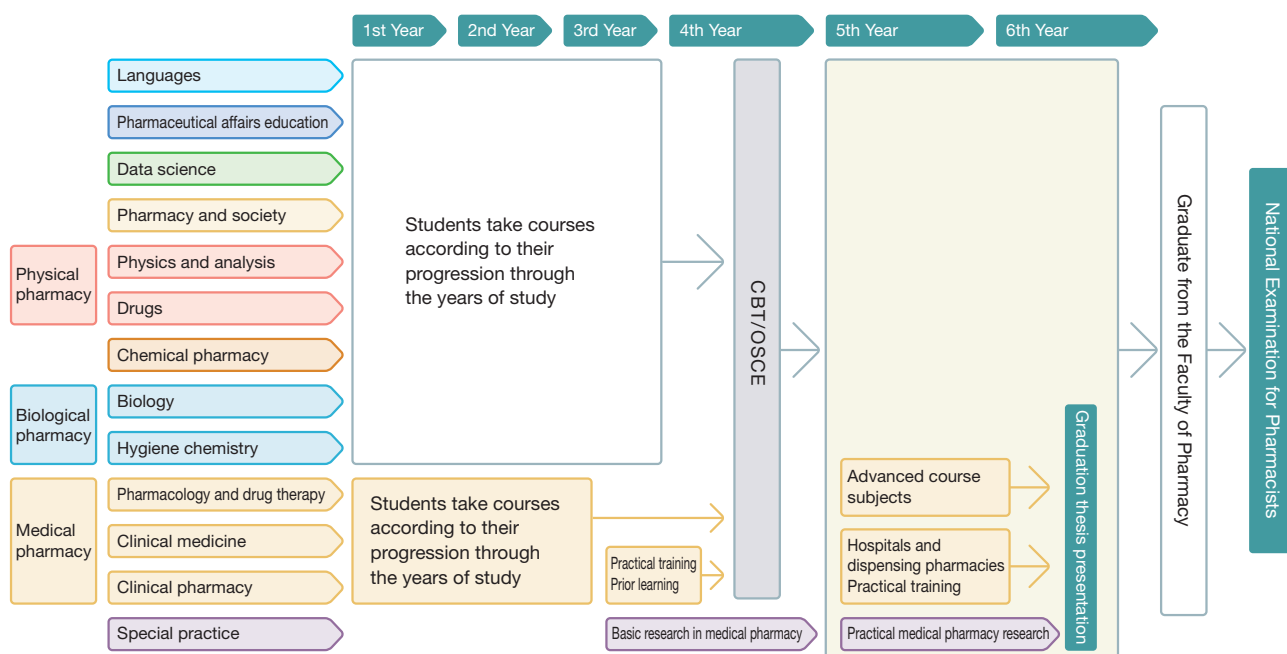
## Why Study in the Faculty of Pharmacy?

A curriculum that blends practice with research, based on a framework that draws upon all of Juntendo's resources

Juntendo University's Faculty of Pharmacy offers an enriched curriculum that covers everything from the basics of pharmaceutical science to clinical applications, while tapping into Juntendo University Hospital's clinical capabilities. Designed to cultivate true pharmacy professionals, the curriculum ensures that each and every student develops an international outlook while receiving a practical education in pharmaceutical science.

With clinical instructors from the Faculty of Medicine playing the central role, staff from across Juntendo are involved in providing education in clinical medical subjects, thereby supporting students in acquiring a wide range of knowledge and skills. To ensure that students have no weak subjects or areas where they lack confidence, the faculty conducts checks of their level of understanding and review sessions based on question-setting trends in the national examination. With the Pharmaceutical Education and Research Center playing the core role, the Faculty of Pharmacy aims to enable all students to immediately pass the National Examination for Pharmacists after six years.

### Process from enrollment to graduation



## Career Paths after Graduation

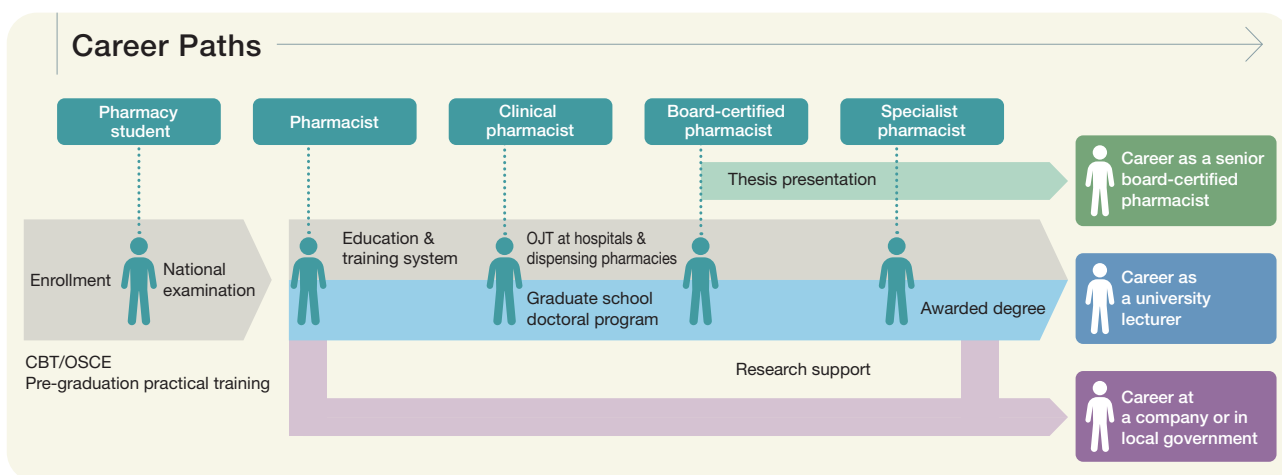
Career design possibilities that graduating from Juntendo University opens up

As a pharmacist with a high level of clinical ability

- Clinical pharmacist able to contribute to safe, appropriate drug therapy based on a pharmaceutical science perspective
- Specialist pharmacist able to deal with sophisticated, state-of-the-art medical care
- Family pharmacist providing face-to-face care in community medicine

As a researcher, government official, or company employee who understands clinical matters

- University lecturer able to undertake education and research informed by experience of clinical practice
- Company employee able to undertake drug discovery and monitoring tailored to needs in front-line medical care
- Government official ensuring safety and peace of mind in medical care





## Graduate School

# Graduate School of Medicine

Master's Program  
Doctoral Program

Juntendo University Graduate School of Medicine positions medicine as a total science focused on humankind, offering a forum for education and research to understand and put into practice ever-advancing medical knowledge and technologies, and to master the ability to update them ourselves. Our goal is to nurture physicians and medical scientists to become not only scientists, but also highly sensitive individuals with a well-rounded education. The majority of education and research at the graduate school is conducted by laboratories focusing on 79 research fields, 20 research promotion centers, 13 endowed departments, 42 joint research departments, 2 university-industry research cooperation departments, and 3 joint graduate school courses (in partnership with the National Cancer Center Japan, the National Center for Global Health and Medicine, and Sagami National Hospital).

We have also established a master's program that enables graduate students to learn the basics of medicine, the life sciences, and health care science, and cultivates individuals with a broad, creative outlook, who will continue to be willing to engage with the field of medical science throughout their lives, and who will become highly motivated researchers and specialists in the fields of medical science and medical care at the international level. The master's program offers eight degree programs: Advanced Medical Science, Clinical Genetics (Genetic Counseling), Data Science, International Medical Sciences, Public Health and Global Health, Clinical Translational Science, Health Communication, and Global Health.





**Juntendo is a leading Japanese center for cultivating researchers and highly-skilled practitioners capable of working both within Japan and overseas**

Juntendo University Graduate School of Medicine positions medicine as a total science focused on humankind, offering a forum for education and research to understand and put into practice ever-advancing medical knowledge and technologies, and to master the ability to update them ourselves. Our goal is to nurture physicians and medical scientists to become not only scientists, but also highly sensitive individuals with a well-rounded education. In other words, it is a center for education and research to nurture leaders and practitioners of medicine and medical care at the international level, who are imbued with the spirit of our motto, *Jin* (benevolence).

We have launched an innovative new initiative in the form of a graduate school partnership system, concluding agreements with the National Cancer Center Japan (FY2012), Japan Institute for Health Security and Sagami National Hospital (FY2014) In addition, our efforts to nurture medical professionals specializing in cancer care have been highly acclaimed, with our graduate school being selected by the Ministry of Education, Culture, Sports, Science and Technology (MEXT) for inclusion in its Cancer Professional Training Plan in FY2012. In FY2017, we were selected for inclusion in MEXT's Program for Nurturing Physicians in Basic Research, under which we and our partner institutions (the University of Tokyo and Fukushima

Medical University) are forging links through ICT and cyclical exchange of personnel, aiming to carry out the necessary investigation of causes of death at regional core hospitals, undertake remote pathologic diagnosis, cultivate pathologists with a knowledge of genomic medicine, and deploy pathologists in Japan's provinces. Based on Juntendo's fundamental principles and strong ethical perspective, we have set ourselves the goal of cultivating basic medical scientists and clinical physicians with the willingness to dedicate their lives to medicine, and physician-scientists capable of moving between both realms, thereby ultimately creating people who will provide relief to all those who are suffering, whether physically or mentally. For the doctoral dissertation, those whose main dissertation and sub dissertation have a total impact factor (IF) of at least 6.0 in major international journals will be able to complete the program in three years.

We also strive to put in place environmental enhancements. Since the 2012 academic year, lectures have taken place in Century Tower, a lecture building equipped with an ICT environment that links Juntendo's campuses and affiliated hospitals via a dedicated network, enabling students to attend lectures remotely.

**Trends in the Number of Doctoral Degrees Awarded by Juntendo University Graduate School of Medicine**

Doctoral degrees in medicine By coursework: 3,226 degrees By thesis only: 2,582 degrees (Total: 5,808 degrees)

- Doctoral Degrees by Coursework
- Doctoral Degrees by Thesis Only

◎ Percentage of doctoral dissertations in English / Average IF <sup>\*1,3</sup>

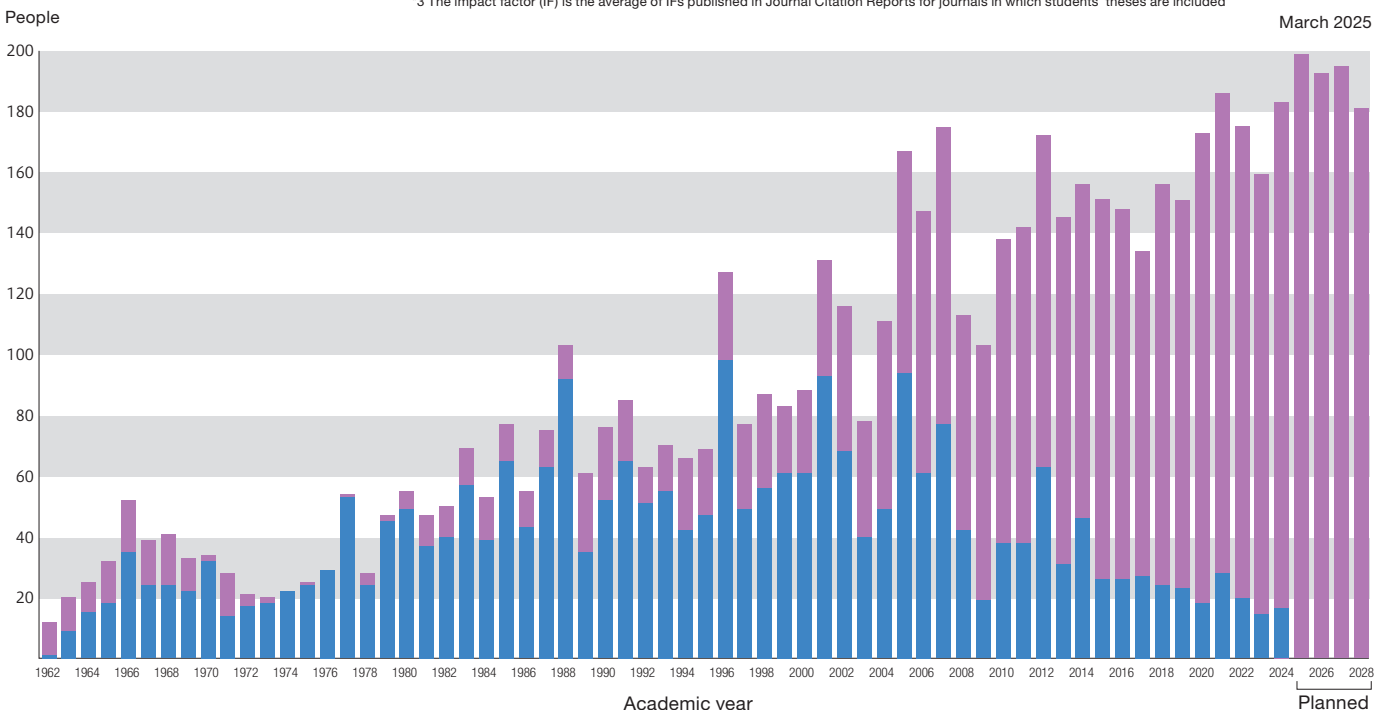
Dissertations for doctoral degrees by coursework: 99.2% in English / Average IF ≈ 4.115 <sup>\*2</sup>

Dissertations for doctoral degrees by thesis only: 100.0% in English / Average IF ≈ 3.371

<sup>\*1</sup> The calculation period covers individuals who received their degree between the 2022 and 2025 academic years

<sup>\*2</sup> The average IF of dissertations for doctoral degrees by coursework covers individuals whose doctoral dissertation was accepted for publication

<sup>\*3</sup> The impact factor (IF) is the average of IFs published in Journal Citation Reports for journals in which students' theses are included





We have substantially expanded the Graduate School of Medicine's doctoral program curriculum via MEXT's Support Program for Improving Graduate School Education.

Year of Study	Curriculum		Research Support	
	Core Programs	Specialized Programs		
1 <sup>st</sup> Year	<p>Entrance Ceremony/Orientation</p> <p><b>Basic Education</b> <span>Compulsory</span></p> <ol style="list-style-type: none"> <li>Basic Course</li> <li>Research Support Course (Research Support Center Intensive Course)</li> </ol> <p><b>Practical Education</b> <span>Compulsory Electives</span></p> <ol style="list-style-type: none"> <li>Molecular Pathobiology</li> <li>Allergy and Immunology</li> <li>Oncology</li> <li>Medical Neuroscience</li> <li>Lifestyle Medicine</li> <li>Medicine in Society</li> <li>Animal Experiments</li> <li>Identification of Bacteria Species and Virus Titration</li> <li>Introduction to Clinical Statistics</li> <li>Applied Clinical Statistics</li> <li>Introduction to Medicine and Medical Sciences</li> <li>Health and Productivity Management in Our Society</li> </ol>	<p><b>Lecture Series</b> <span>Compulsory/Compulsory Electives/Electives</span></p> <ol style="list-style-type: none"> <li>Graduate School Special Lectures</li> <li>Graduate School Special Lectures (Urayasu Hospital)</li> <li>Graduate School Special Lectures (English)</li> <li>Advanced Medical Science</li> <li>Current Topics</li> <li>Intensive English (1)</li> <li>Intensive English (2)</li> <li>Basic Lecture Series: Use of Antimicrobial Agents</li> <li>Basic Healthcare Management</li> </ol>	<p><b>Specialized Education</b> <span>Compulsory</span></p> <p>Lectures, Practicum, Experiments and Practicals</p> <p><b>Course for Researchers / Course for Advanced Clinical Specialists</b></p> <ol style="list-style-type: none"> <li>Environment and Humans</li> <li>Life Functions of the Human Body</li> <li>Regeneration and Reconstruction of the Human Body</li> <li>University Hospital</li> <li>Endowed Department</li> <li>Collaborative Research</li> <li>Industry-Academia Collaborative Research Department</li> <li>Affiliate Graduate School</li> </ol>	Specialized Research
	Evaluation of Research Progress (August) Evaluation of Research Progress: Preparation and Submission of Research Plan and Research Guidance Plan			
	Performance evaluation based on 1st-year attainment targets (self-appraisal / evaluation by faculty member)			
	Research Support Center / Research Strategy Promotion Center			
2 <sup>nd</sup> Year	<p><b>Basic Education</b> <span>Compulsory</span></p> <p>3. Advanced Course</p>	<p><b>[Reference]</b></p> <ol style="list-style-type: none"> <li>1-2. [Required 3 times in each of the 1st, 2nd, and 3rd years]</li> <li>3. [Required twice in each of the 1st, 2nd, and 3rd years]</li> <li>4-9. [Elective]</li> </ol>	<p><b>Specialized Research</b> <span>Compulsory</span></p> <p>Dissertation Basics / Applied Practicals</p> <ul style="list-style-type: none"> <li>Poster Sessions</li> <li>Research Guidance (guidance on preparing the dissertation)</li> </ul>	Research Support Center / Research Strategy Promotion Center
	Evaluation of Research Progress (March)      Preparation and Submission of Research Progress Report			
	Performance evaluation based on second-year attainment targets (self-appraisal / evaluation by faculty member)			
3 <sup>rd</sup> Year	Evaluation of Research Progress (March)      Interim Evaluation Based on a Poster Session		Research Support Center / Research Strategy Promotion Center	
	Performance evaluation based on third-year attainment targets (self-appraisal / evaluation by faculty member)			
4 <sup>th</sup> Year	Preparation and Submission of Dissertation			Research Support Center / Research Strategy Promotion Center
	Evaluation of Research Progress (Application Deadline: November)      Dissertation Defense [Final Examination] (December-February or thereabouts)			
	Performance evaluation based on fourth-year attainment targets (self-appraisal / evaluation by faculty member)			
Completion requirement: 30 credits				
Degree Conferment				



## Cultivating highly motivated researchers and specialists in the fields of medical science and medical care at the international level, whether or not they hold a license to practice medicine

We established our master's program in the 2013 academic year, enabling students who were not educated at a school of medicine to learn the basics of medicine, the life sciences, and health care science. The curriculum for the master's program in medical science cultivates individuals with a broad, creative outlook, who will continue to be willing to engage with the field of medical science throughout their lives, and who will become highly motivated researchers and specialists in the fields of medical science and medical care at the international level, imbued with the spirit of *jin* (benevolence).

In the 2019 academic year, we established a new master's program in public health, for those wishing to study epidemiology, biostatistics, social and behavioral science, public health and health care administration. The objective of the public health course is to cultivate highly skilled professionals with the practical and managerial skills required for clinical research, and specialists with the practical capabilities needed in front-line global health settings, including public health measures, health guidance, and international public health activities.

The 2020 academic year saw the establishment of our new genetic counseling course to train certified genetic counselors, followed in the 2021 academic year by the launch of our health communication (medical interpreting) program, which qualifies students to take the examination to become an accredited medical interpreter, and our data science program, which cultivates personnel equipped with AI-related knowledge and skills, who are capable of analyzing big data to create solutions and new value.

We currently offer eight degree programs categorized according to the degree awarded. Students can choose between degree programs in Advanced Medical Science, International Medical Sciences, Clinical Genetics (Genetic Counseling), and Data

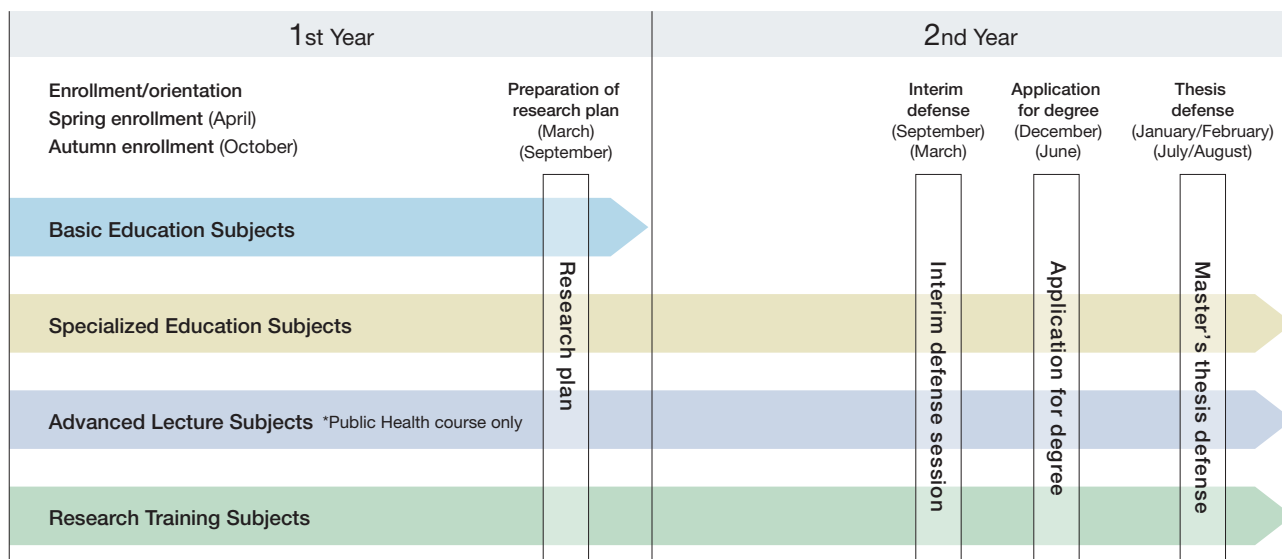
Science, for which the degree of Master of Science (Medical Science) is available, and degree programs in Public Health and Global Health, Clinical Translational Science, Health Communication, and Global Health, for which the degree of Master of Science (Public Health) is available.

\* Only the International Medical Sciences and Global Health programs offer an English curriculum with autumn enrollment. All other degree programs are conducted in Japanese.

Those who have been educated in a field other than medicine and are already working in the field of medicine or medical care will be nurtured to become medical professionals capable of demonstrating leadership in their field of specialization, and will gain further expertise to become research administrators able to provide advice from a researcher's perspective. Those with no previous experience of studying the basics of medicine and medical care will be given the opportunity to comprehensively study fundamental medical knowledge in the fields of basic medical science and basic clinical medicine, thereby cultivating leaders capable of playing active front-line roles in fields associated with medical care in the future.

The special research subject cultivates individuals with interdisciplinary knowledge, who are capable of researching a theme in which they are interested with their research supervisor and making ongoing use of the specialist knowledge gained to advance research in the field of medical science. Those aiming to advance to the doctoral program are expected to join the Juntendo Graduate School of Medicine doctoral program after completing their master's program and, in the future, find employment in the field of medical care as university researchers or technicians, or at government offices, companies, or hospitals.

### Curriculum overview chart



# Graduate School of Medicine (Master's Program)

The master's program of the Graduate School of Medicine offers a choice of two courses and eight degree programs.

Course	Degree Program	Degree Awarded		
<b>Medical Science Course</b>	<p><b>Advanced Medical Science Degree Program (Curriculum in Japanese)</b></p> <p>We established this program to enable students who were not educated at a school of medicine to learn the basics of medicine, the life sciences, and health care science. The curriculum for the Advanced Medical Science degree program cultivates individuals with a broad, creative outlook, who will continue to be willing to engage with the field of medical science throughout their lives, and who will become highly motivated researchers and specialists in the fields of medical science and medical care at the international level, imbued with the spirit of <i>Jin</i> (benevolence).</p> <p><b>Clinical Genetics (Genetic Counseling) Degree Program (Curriculum in Japanese)</b></p> <p>As a program designed to train certified genetic counselors, the Clinical Genetics (Genetic Counseling) degree program cultivates professionals who will play a vital role in genomic medicine, equipping them with the specialist knowledge and counseling theories and techniques required for the practice of genetic counseling. This will enable them to offer psychological and social support to patients requiring genetic medical treatment and their family members through the provision of various information, including appropriate genetic information and details of social support systems, to help them make independent decisions.</p> <p><b>Data Science Degree Program (Curriculum in Japanese)</b></p> <p>The Data Science degree program equips students with knowledge and skills in AI, cultivating individuals capable of solving problems and creating new value by analyzing big data accumulated in various settings, including medical care, health, and sport. The aim of this program is to discover and develop the managers and top executives who will open up a path to the next generation in the realms of AI and data science in fields such as business, medical care, and sport.</p> <p><b>International Medical Sciences Degree Program (Curriculum in English)</b></p> <p>This program is open to international students who enroll in the autumn (October).</p>	<b>Master of Science (Medical Science)</b>		
	<b>Public Health Course</b>		<p>The Public Health Course cultivates highly skilled professionals with the practical and managerial skills required for clinical research and specialists with the practical capabilities needed in front-line global health settings, including public health measures, health guidance, and international public health activities. Topics of study include epidemiology, biostatistics, social and behavioral science, and public health and health care administration.</p> <p><b>Public Health and Global Health Degree Program (Curriculum in Japanese)</b></p> <p>Public health is a field of study whose objective is to promote people's health and address such threats to health as the burden of disease and disparities in standards of health by putting measures into practice at the community level. This program cultivates personnel of the kind described below, who are equipped with the ability to solve all kinds of public health problems and will serve as experts and instructors both within Japan and overseas.</p> <ul style="list-style-type: none"> <li>• Outstanding personnel with basic knowledge, ethical perspectives, and creativity, who will independently undertake research and practice in the public health and global health fields</li> <li>• Personnel with a global outlook, who are capable of addressing all kinds of health problems within Japan and overseas</li> <li>• Personnel who not only have insight into the reality of health disparities and the health of vulnerable people from a global perspective, but also have lofty ideals in the form of the desire to help tackle the challenges faced by humanity</li> </ul> <p><b>Clinical Translational Science Degree Program (Curriculum in Japanese)</b></p> <p>This program cultivates clinical research support coordinators of the kind described below, with an emphasis on practical skills. In doing so, we make full use of the university's excellent clinical research support organization (Juntendo Clinical Research and Trial Center), as well as the abundant clinical data provided by Juntendo University Hospital, which is accredited by Joint Commission International (JCI) and is also certified as a Clinical Research Core Hospital.</p> <ul style="list-style-type: none"> <li>• Personnel proficient in the skills required to support clinical research</li> <li>• Personnel with a wide-ranging understanding of the duties involved in clinical research support, and the outstanding team management ability required to improve multidisciplinary collaboration</li> <li>• Personnel capable of building frameworks for smooth collaboration between clinical researchers and those who support them</li> </ul> <p><b>Health Communication Degree Program (Curriculum in Japanese)</b></p> <p>Designed to train certified medical interpreters, the Health Communication degree program cultivates individuals who will play a vital role in medical interpreting, providing appropriate support to patients in need of medical interpreting services and their families by facilitating communication between medical personnel and patients. Students take courses based on the Ministry of Health, Labour and Welfare's medical interpreter training curriculum that equip them with the specialist knowledge and techniques required for medical interpreting.</p> <p><b>Global Health Degree Program (Curriculum in English)</b></p> <p>This program is open to international students who enroll in the autumn (October).</p>	<b>Master of Science (Public Health)</b>



## Graduate School

# Graduate School of Health and Sports Science

Master's Program  
Doctoral Program

When it opened in 1971, Juntendo University's Graduate School of Health and Sports Science was Japan's first graduate school of physical education at a private university. Today, we aim to provide graduate students with a systematic understanding of sports science, sports social science, and health science, and to enable them to gain more advanced, integrated insights through the application of this understanding. The master's program builds the foundations for health and sports science research through a systematic understanding of these topics and research based on this understanding. In addition, it also cultivates researchers equipped with skills in identifying issues and solving problems that will enable them to flourish in a wide range of areas of society. In the doctoral program, we strive to cultivate outstanding doctoral candidates through more advanced and in-depth research in the disciplines of sports science, sports sociology and health science, aiming to ensure a complete understanding of health and sports science via the organic integration of everything they have learned during their academic career.



# Graduate School of Health and Sports Science

## Exploring health promotion and the scientific basis and social scientific value of sport

Juntendo University opened its Graduate School of Physical Education in 1971, establishing Japan's first graduate school of physical education at a private university. When the Faculty of Physical Education was subsequently reorganized into the Faculty of Health and Sports Science, the graduate school was renamed the Graduate School of Health and Sports Science.

In 2000, we received approval to establish a doctoral program, and in 2025, we established a one-year master's degree course designed for individuals with practical experience. The graduate school today consists of a master's program with a maximum enrollment of 70 students, a one-year master's course on which a few individuals are enrolled, and a doctoral program with a maximum enrollment of 10 students.

In 2006, we began offering master's program lectures in the evening at our Hongo-Ochanomizu Campus in Tokyo, with the aim of providing recurrent education for working members of society. Working in collaboration with the various graduate schools, including those in medicine, healthcare, nursing, and health sciences, we cultivate experts in health and sports science who take advantage of our distinctive features as a graduate school at a comprehensive health university.

Based on Juntendo's motto *Jin* (benevolence) and its guiding principle of continuously moving forward, we as a graduate school conduct medical and scientific research on sport and health science, and educate graduate students to be creative and practical professionals who can contribute fully to the formation of wholesome and cultured lives among the public. The three key pillars are sports science, sports social science, and health science.

The realm of sports science makes use of existing physical education research findings and methodologies in examining the attributes of all sports at every level, from elite athletes to ordinary members of the public. It also explores the medical and

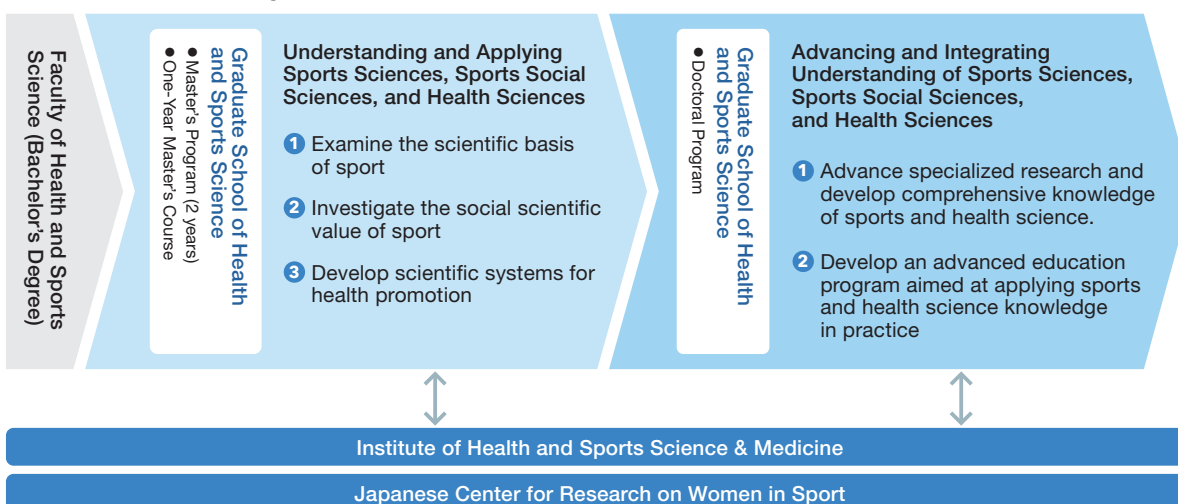
scientific principles that form the basis of sports coaching. Grounded in sociology and management studies, the realm of sports social science focuses on social phenomena that have a major influence on sport and society, such as the sports business and sports media. It explores the cultural and economic effects of sport and the understanding of sport's essential social scientific value. In doing so, research findings from communication theory and organizational development theory, among others, are employed, along with the research technique of social research, which is commonly used in social science.

The realm of health science seeks to advance health promotion and establish systematic methodologies, with the intention of shaping comfortable environments and forming healthy lifestyles throughout people's lives. It focuses on lifestyle phenomena associated with autonomous efforts to maintain and improve health by people of all ages and standards of health, including healthy individuals and people with disabilities.

The objective of the master's program is to cultivate personnel well-versed in the practical and theoretical grounding that will enable them to systematically apply the outcomes of learning and research concerning the scientific basis of sport, its social scientific value, and health promotion to the maintenance and improvement of human health and physical fitness, and the social development of sport.

The purpose of the doctoral program is to undertake research and education that contributes to the acquisition and creation of knowledge concerning the science of sport and health, with the goal of cultivating more advanced experts and coaches capable of conducting creative advanced research independently and, rather than simply focusing on specialization, applying the results to the advancement of health and sports science in order to develop more sophisticated educational programs.

### Graduate Educational Programs



### High Performance Sports Science certification program

In the 2024 academic year, we introduced the High Performance Sports Science certification program for students enrolled on our master's and doctoral programs. This certification is awarded separately from the student's degree and is officially recognized by the graduate school.

To earn this certification, students must meet the completion requirements for both their enrolled degree program and this certification program. Through specialized coursework, internships, and research, the program aims to develop the advanced expertise and research skills necessary for careers in high-performance sports science.

### Establishment of a one-year course for individuals with practical experience

Starting in the 2025 academic year, we are offering a one-year master's degree course. The curriculum for this one-year master's course is designed for individuals with practical experience.

Across all sectors of society today, there are growing expectations concerning further study by working members of society, along with the cultivation of personnel with the advanced expertise and abilities required to play leadership roles. In the field of health and sports science, too, demand is increasing for professionals who can contribute to the development of the sporting world and to health promotion among the public. Accordingly, this graduate school aims to meet this social demand as a comprehensive health university.

Premised on the assumption that students will undertake research based on their practical experience, the one-year master's degree course combines research activities with the development of a systematic understanding of all levels, from athletes competing at the international level to ordinary members of the public, focusing on the three areas of sports science, sports social science, and health science.

With the establishment of the one-year course, we aim to expand opportunities for individuals to gain specialized expertise and advanced education. Additionally, we seek to cultivate researchers who can actively contribute as professionals across various sports-related industries. The course is designed to ensure that the research outcomes benefit society as a whole.

The course has been established as part of the Program to Train Early-Career Researchers to Assist in Improving International Competitiveness, which is funded under the Japan Sports Agency's Leading-edge Research Project for Sports Medicine and Science.





## Graduate School

# Graduate School of Health Care and Nursing

Master's Program

Doctoral Program

The Graduate School of Health Care and Nursing aims to cultivate educators, researchers, and specialist nursing professionals equipped with advanced practical nursing skills, capable of supporting the pursuit of wellbeing and a better quality of life for people with diverse values and various levels of health. More specifically, we aim to nurture nursing professionals capable of contributing to society in various settings both in Japan and overseas by fostering high-quality practical nursing skills, education skills, and research skills that will last a lifetime. Furthermore, we work with the Graduate School of Medicine and the Graduate School of Health and Sports Science, making the most of Juntendo's advantages as a comprehensive health university with a broad perspective on health.



# Graduate School of Health Care and Nursing

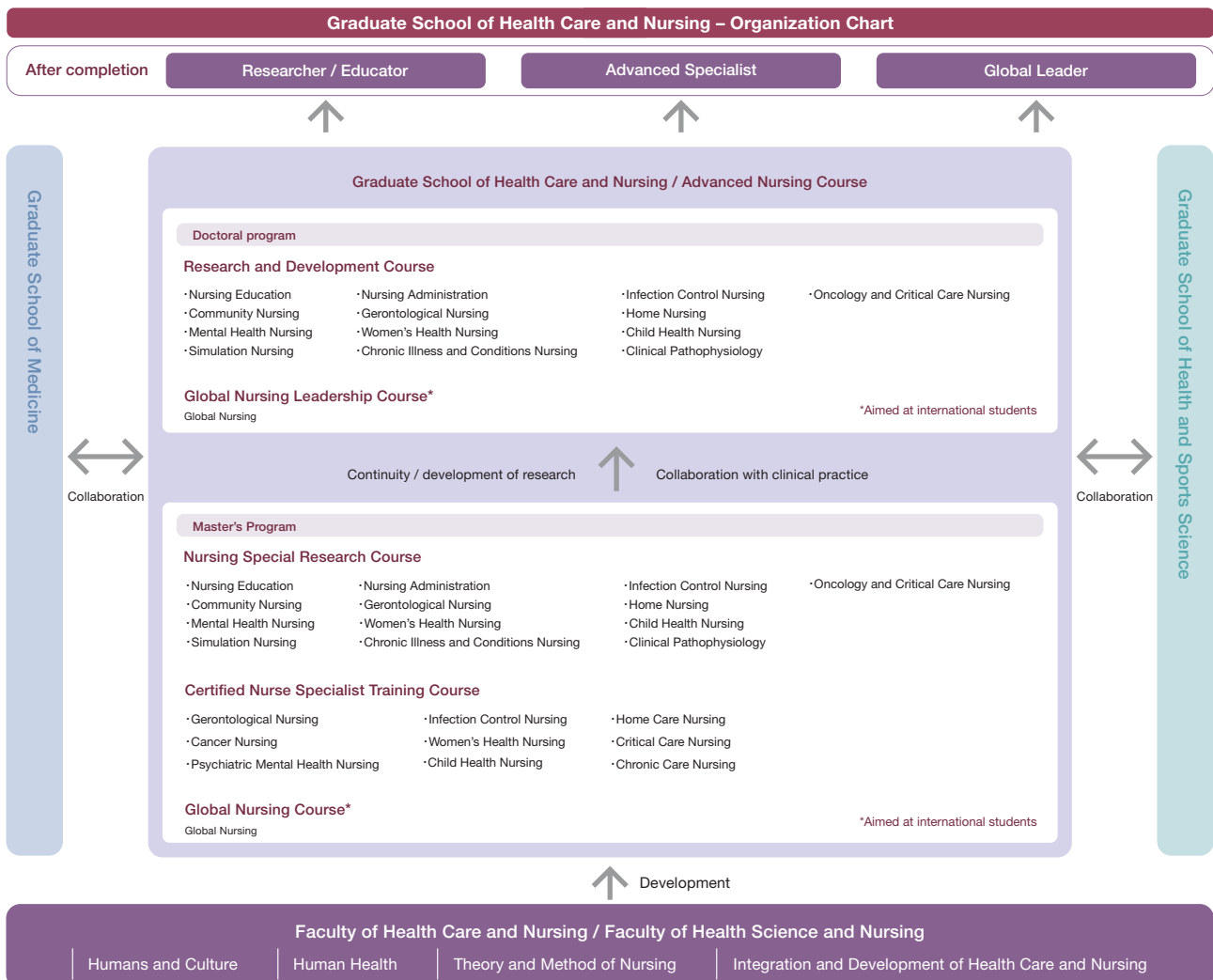
## Fostering nurses with advanced practical nursing skills and education and research capabilities, who can contribute to the health of people both at home and abroad

Constant, ongoing learning of new knowledge and theories is required in order to support people with health problems and provide high-quality nursing care to those with illnesses. It is also important to develop practical nursing skills to respond innovatively and creatively to changes in the health, medical care and welfare environments by making effective use of research results, and to contribute to the health of people both at home and abroad.

In the ever-changing fields of health, medical care and welfare, demonstrating advanced practical nursing ability based on scientific evidence is a must. As a practical science that contributes to people's desire to be healthy, nursing science also needs to create and develop new theories and methodologies. In addition, since nursing is a profession based on interpersonal relationships, it is vital for nursing professionals to cultivate ample knowledge and a sense of humanity throughout their lifetime in order to learn and grow together with those to whom they provide health care.

To respond to people's needs for health care and the academic advancement of nursing, based on the spirit of the university motto *Jin* (benevolence), Juntendo University Graduate School of Health Care and Nursing aims to foster both nursing professionals with advanced practical abilities and educators and researchers exploring approaches to nursing methods, thereby contributing to the health of people at home and abroad.

In partnership with the Graduate School of Medicine and the Graduate School of Health and Sports Science, we are providing education that enables students to explore nursing from an interdisciplinary perspective by making full use of Juntendo's strengths as a comprehensive health university. We also support nursing professionals by offering both daytime and night time courses for working people and accepting students who take only specific courses at this school, so that they can continue to develop their careers.



## Key Features of the Graduate School of Health Care and Nursing

### An environment supportive of diverse forms of learning

In addition to lectures at our Urayasu, Hongo-Ochanomizu, and Mishima campuses, the Graduate School of Health Care and Nursing offers remote lectures via Zoom, thereby enabling working graduate students and graduate students living a long way from the university to access our ample range of lectures.

We have also established a curriculum that enables graduate students to receive education and research guidance in the evening and on Saturdays, to suit their working hours at their place of employment and other circumstances.

### A diverse range of advanced practice nurse courses

We aim to cultivate nursing professionals equipped with educational and research abilities, who can respond flexibly, innovatively, and creatively in medical, health care, and welfare settings. As part of this, we offer advanced practice nurse (certified nurse specialist) courses in nine fields: chronic illness and conditions nursing, oncology nursing, infection control nursing, child health nursing, gerontological nursing, mental health nursing, home care nursing, women's health nursing, and critical care nursing. The Japan Association of Nursing Programs in Universities has accredited 38 credits on our curriculum.

### Providing study opportunities for a wide range of nursing professionals

The master's program accepts applications from individuals with practical nursing skills, including at least three years of clinical experience at the time of application, regardless of whether they have a bachelor's degree. The selection process allows applicants having a full-time job to write a short essay for evaluation of their richness of spirit based on Juntendo's motto *Jin* (benevolence), instead of a foreign language examination. We have also reduced the financial burden on graduate students by setting our graduate school fees at the same level as national universities.

### Establishment of the Simulation-Based Education and Research Center

October 2022 saw the opening of the Graduate School of Health Care and Nursing's Simulation-Based Education and Research Center. It is Japan's only nursing-focused research center in the field of simulation-based education and research. The center offers the opportunity to use a multitude of high-performance simulators and training instruments that replicate various kinds of biological information. The establishment of this center further enhances our education and research aimed at cultivating nurses with advanced practical nursing skills, who are capable of responding to the increasingly advanced and specialized nature of medical care. We aim for it to become an advanced research facility with a global reach by pursuing research into simulation-based education aimed at achieving best practice in nursing, establishing advanced education techniques, and undertaking development research focused on ICT-based education and clinical support tools.





## Graduate School

# Graduate School of Health Science

Master's Program

Doctoral Program

Our master's program furnishes future medical professionals with the adaptability and practical expertise needed to navigate evolving health care environments. Students develop advanced skills in physical therapy and radiological technology grounded in scientific evidence. The program also cultivates educators and researchers who drive innovation by developing and expanding new methodologies in these fields.

Our doctoral program equips students with the expertise, specialized skills, and advanced research capabilities necessary to contribute to academia in physical therapy and radiological technology. Graduates are capable of applying their research in diverse professional settings, both in Japan and internationally, while also strengthening academic study in these disciplines. Additionally, the program develops leaders who pioneer research in physical therapy, radiological technology, and biological quantum sciences, while also gaining the ability to instruct the next generation of experts.



# Graduate School of Health Science

The Graduate School of Health Science offers master's and doctoral programs in two specialized fields: physical therapy and radiological technology. Our curriculum is carefully structured to provide a systematic learning experience, ensuring a smooth transition from basic to applied knowledge and further to advanced research.

## Master's Program

The master's curriculum consists of four core elements:

1. Common compulsory courses
2. Basic core compulsory courses
3. Core elective courses
4. Practicum and research training

## Doctoral Program

The doctoral curriculum consists of:

- Coursework-based core elective courses
- Research-focused practicum and training

## Specializations

In the field of physical therapy, the master's program includes four specialized areas:

1. Physical Therapy for Neuroscience and Motor Control
2. Physical Therapy for Musculoskeletal and Sports Disorders
3. Physical Therapy for Internal Disorders
4. Advanced Acute Care Physical Therapy

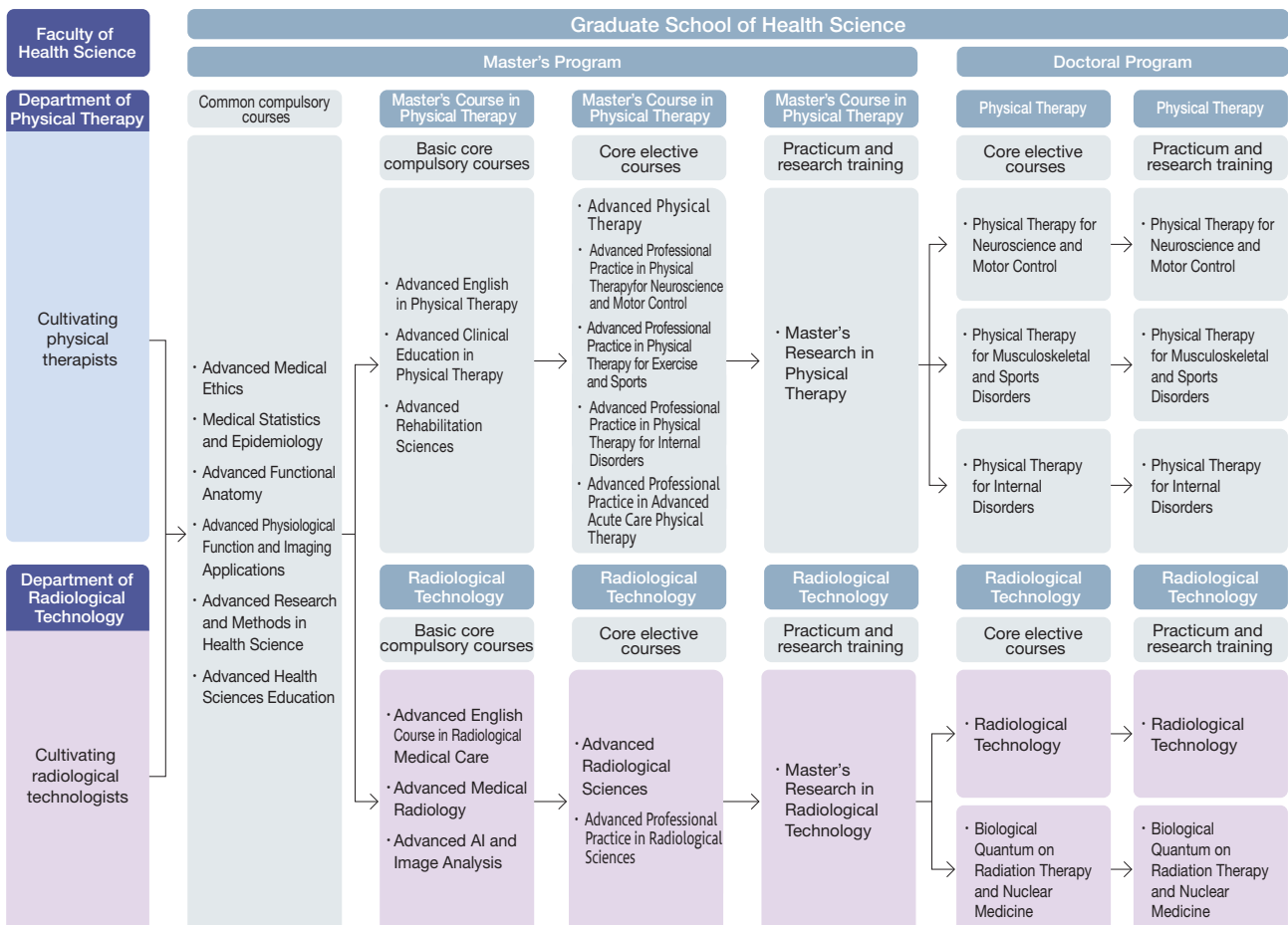
The doctoral program continues with three core areas:

1. Physical Therapy for Neuroscience and Motor Control
2. Physical Therapy for Musculoskeletal and Sports Disorders
3. Physical Therapy for Internal Disorders

In the field of radiological technology, both the master's and doctoral programs offer specialization in:

1. Radiological Technology
2. Biological Quantum on Radiation Therapy and Nuclear Medicine

Students receive expert guidance from faculty members through lectures, hands-on practicums, and individualized research support, allowing them to develop deep expertise in their chosen field.





## Graduate School

# Graduate School of International Liberal Arts

Master's Program  
Doctoral Program

The multilayered and pluralistic wisdom of the liberal arts offers what humanity needs to surmount complex ongoing global crises in such areas as finance, economics, war, terrorism, and infectious diseases. To this end, students at the Graduate School of International Liberal Arts learn about the modern liberal arts at the graduate level. They cover topics ranging from the humanities and social sciences, including communication, political science, and economics, to the natural and applied sciences, including health and sports science, statistics, medicine, and public health.

Through the holistic study of multiple specialist fields from the realms of both the humanities and social sciences and the natural sciences, students will equip themselves with multifaceted lateral thinking and mindsets, and acquire the ability to take a panoramic view of academic fields. By teaching multiple specialized fields of study, we tap into the key distinguishing feature of liberal arts education—the mastery of integrated, multilayered, and multidimensional knowledge—for the purpose of cultivating talented individuals. In February 2025, we applied to the Ministry of Education, Culture, Sports, Science and Technology for approval to establish a doctoral program with an enrollment capacity of three students. Our objective in founding this program is to cultivate highly creative researchers capable of creating new insights and value by assimilating a diverse array of knowledge and education from both transdisciplinary and interdisciplinary perspectives.



# Graduate School of International Liberal Arts

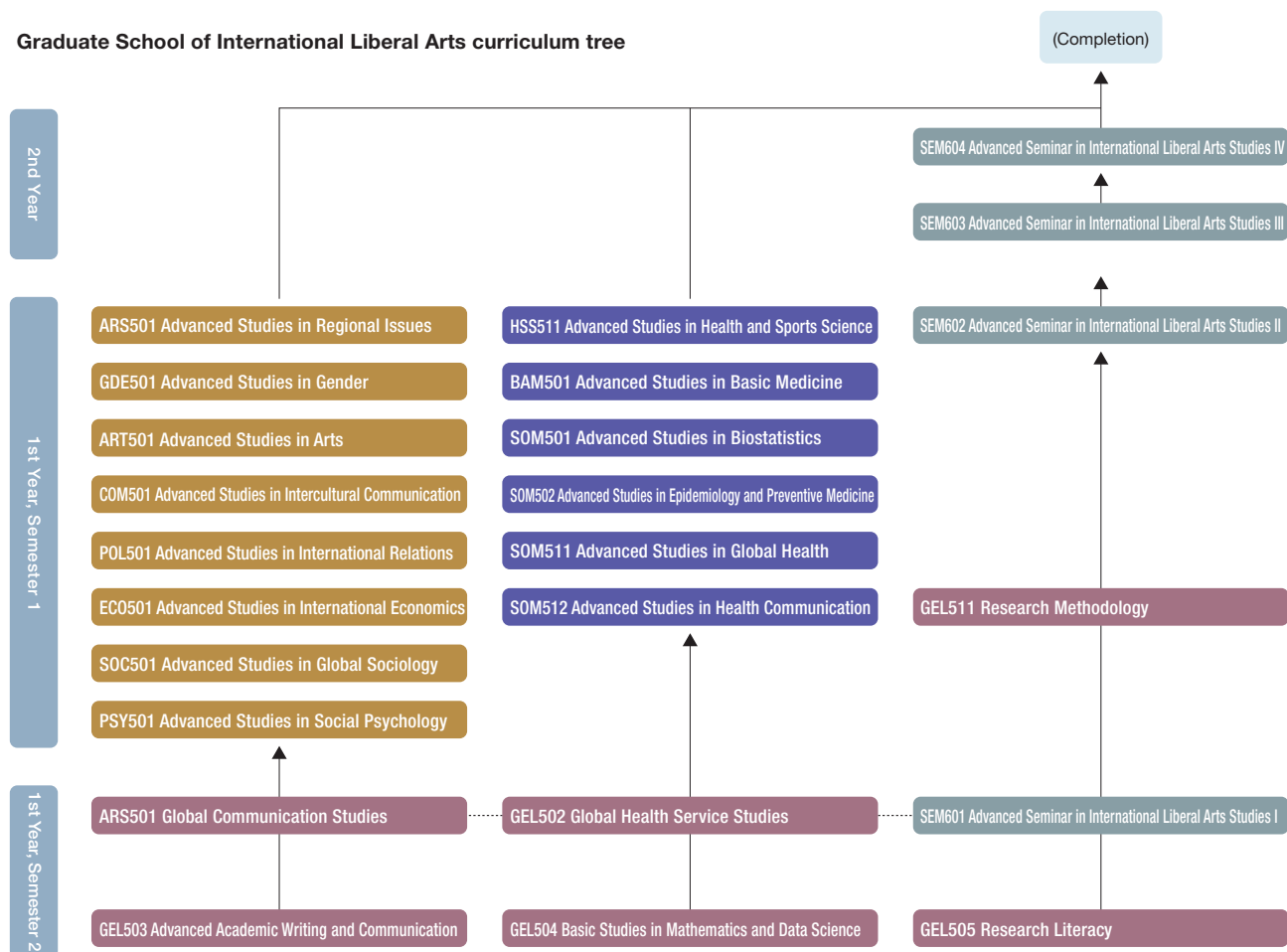
Even as of 2025, the world continues to face geopolitical and humanitarian crises in the form of wars between Ukraine and Russia, and Israel and Palestine. Diverse other crises are occurring simultaneously across the globe, including environmental problems such as extreme weather conditions and large-scale forest fires, steep fluctuations in prices and interest rates, and economic instability caused by supply chain disruption.

We believe that resolving the challenges these crises present will require not uniform, standardized knowledge in specific areas of expertise, but multilayered, pluralistic knowledge that is transdisciplinary and multidisciplinary, integrating multiple areas of expertise.



This graduate school was established to answer society's call for talent with sophisticated problem-solving skills by expanding graduate-level education in the liberal arts. This is essential in order to overcome the complex global crises the world currently faces. What society is looking for in terms of more advanced global talent is individuals equipped with the transdisciplinary and interdisciplinary education needed to contribute to a sustainable society amid globalization. Rather than differentiating between the humanities and the sciences, such talent requires a sophisticated intellectual grounding, with the capacity to obtain a wide-angle view of multiple disciplines, thereby enabling them to expand the circle of mutual trust, solidarity, and cooperation while recognizing and respecting human diversity and differences.

Graduate School of International Liberal Arts curriculum tree





## Graduate School

# Graduate School of Health Data Science

Master's Program

Doctoral Program

One of Juntendo's strengths is our ability to leverage the vast quantities of medical data we have amassed over decades in the fields of health, medical care, and sport, and deploy this data in research and education. Juntendo has already tapped into these resources with the establishment of the undergraduate-level Faculty of Health Data Science, as well as the Graduate School of Medicine's Data Science program. We are cultivating information scientists proficient in AI and data science, along with educators and researchers who can generate new insights from their research output, and disseminate and deploy them throughout society. At the Graduate School of Health Data Science, which opened in April 2025, we will adopt a holistic approach to health—not only within medical and clinical contexts but also in people's everyday lives and broader social activities. We will train highly skilled information specialists who take a scientific, evidence-based approach to utilizing digitalization and data analysis to solve complex challenges.



# Graduate School of Health Data Science

## Key features of the graduate school

The master's program will foster highly skilled specialists capable of leveraging knowledge in the realms of both health and data science. With an emphasis on statistics, which is the cornerstone of data science, we will equip students with the knowledge and skills required by IT and digital personnel in all kinds of fields, so that they can engage in advanced education and research. We will cultivate personnel armed with the knowledge that serves as the cornerstone of health and medical care, such as anatomy and physiology, who are also proficient in AI and data science. The education they receive will, for example, foster the ability to judge for themselves the accuracy of AI in health settings, where errors generated by AI cannot be allowed to pass undetected. The doctoral program delves deeper into data analytics, computer science, and health data science. By creatively applying these fields, students will become global leaders in advanced information science who can create new societal values, and educators and researchers capable of driving academic innovation.

## Why study here? Prospects for the future

### The spheres of activity open to health data scientists are almost unlimited

The health field is expected to evolve further in the societies of the future. As a highly skilled information specialist, you may use data science techniques to analyze health information in order to improve medical care or public health, or start a business in a new industrial field, such as developing AI-based SaMD health apps. Or you might also become a specialist in the cybersecurity field, capable of defending against the AI-driven cyberattacks that have become an increasing threat in recent years. The arenas where you can play a part are boundless. There are also opportunities for those who wish to be educators and researchers. Among the numerous initiatives already underway are a greater emphasis on the digital field in vocational training, efforts to develop digital human resources at higher education institutions and the like, and the promotion of recurrent education and reskilling for working people. This is driving a growing need to foster educators and researchers who can provide instruction to support these endeavors.

### Master's Program

Subject Category	Subject Name	Year & Semester	
Basic subjects	Basics of Statistics	1 Spring	
	Introduction to Artificial Intelligence	1 Spring	
	Introduction to Biomechanics	1 Spring	
	Introduction to Health and Medicine for Data Scientists	1 Spring	
	Methodology of Academic English	1 Spring	
	Introduction to Information Security Management	1 Spring	
	Research Ethics (Including Engineering Ethics)	1 Spring	
Subtotal (7 subjects)			
Basic core compulsory courses	Advanced Statistics	1 Autumn	
	Advanced Biostatistics	1 Autumn	
	Advanced Artificial Intelligence	1 Autumn	
	Advanced Network Security	1 Autumn	
	Advanced Medical Informatics	1 Autumn	
	Advanced Medical DX and AI	1 Autumn	
Subtotal (6 subjects)			
One elective courses	Data analytics and computer science research area subjects	Population Health Science	1 Spring
		Advanced Multivariate Statistical Analysis	1 Autumn
		Advanced Data Science of Genes and Diversity	1 Autumn
		Advanced Epidemiology	2 Spring
		Advanced Applied Mathematics	1 Spring
		Advanced Computational Science	1 Spring
		Advanced Information Visualization	2 Spring
	Health data science research area subjects	Advanced Distributed Big Data Processing	2 Spring
		Advanced High-Performance Big Data Processing	2 Autumn
		Advanced IoT Security Measures	2 Spring
		Advanced Cybersecurity	2 Autumn
		Advanced Health and Medicine for Data Scientists	1 Autumn
		Advanced Biomechanics	1 Autumn
		Advanced Clinical Ethics and Data Science	1 Spring
Research training subjects	Advanced Clinical Medical Decision-Making	2 Spring	
	Advanced Data Science for Health Economics and Policy	1 Spring	
Research training subjects	Advanced Image Analysis and AI	1 Autumn	
	Practical Training in Medical DX and AI	2 Spring	
	Subtotal (18 subjects)		
	Special Research in Health Data Science I	1 Both	
	Special Research in Health Data Science II	2 Both	
	Subtotal (2 subjects)		
	Total (33 subjects)		
	Degree	Master of Health Data Science	

### Doctoral Program

Subject Category	Subject Name	Year & Semester
Basic subjects	Advanced Topics in Statistics	1 Spring
	Seminar in Artificial Intelligence	1 Spring
	Seminar in Health and Medical Informatics	1 Spring
Subtotal (3 subjects)		
Advanced specialized subjects	Advanced Topics in Data Analytics I	1 Spring
	Advanced Topics in Data Analytics II	1 Autumn
	Advanced Practical in Data Analytics I	2 Spring
	Advanced Practical in Data Analytics II	2 Autumn
	Seminar in Computer Science I	1 Spring
	Seminar in Computer Science II	1 Autumn
	Advanced Practical in Computer Science I	2 Spring
	Advanced Practical in Computer Science II	2 Autumn
	Seminar in Health Data Science I	1 Spring
	Seminar in Health Data Science II	1 Autumn
	Advanced Practical in Health Data Science I	2 Spring
	Advanced Practical in Health Data Science II	2 Autumn
Subtotal (12 subjects)		
Research training subjects	Special Research in Health Data Science I	1 Both
	Special Research in Health Data Science II	2 Both
	Special Research in Health Data Science III	3 Both
Subtotal (3 subjects)		
Total (18 subjects)		
Degree	Doctor of Health Data Science	



## Graduate School

# Graduate School of Medical Science

### Master's Program

Established in April 2026, the Graduate School of Medical Science Master's Program

Cultivating high-level professionals who will shape the future of medical care based on the spirit of *Jin* (benevolence)

The Graduate School of Medical Science aims to cultivate personnel with both practical skills and an inquiring mind, based on the spirit of the university motto *Jin* (benevolence), which means “a heart that considers and cherishes others.” We have established master's courses in clinical laboratory technology and clinical engineering, with the objective of producing professionals and researchers capable of meeting the increasingly sophisticated and diverse needs of front-line medical care through their contributions to a wide range of fields, both within Japan and overseas.

#### Master's Course in Clinical Laboratory Technology

This course aims to develop human resources who have the practical ability to apply advanced clinical testing techniques based on scientific evidence, accurately understand pathological conditions, and contribute to improving the quality of testing techniques. We also focus on developing educators and researchers who can apply knowledge of clinical testing techniques and create new testing and educational techniques.

#### Master's Course in Clinical Engineering

This course aims to develop human resources who can contribute to the provision of safe and effective medical care by acquiring advanced expertise and skills in the operation and management of advanced medical equipment, including AI and ICT. It also supports students who aim to become educators and researchers involved in the development of new medical technologies and equipment, utilizing their specialized clinical engineering knowledge.



# Graduate School of Medical Science (Curriculum and Learning Process)

## From basic to applied, and on to advanced knowledge

The Master's Program consists of four courses: common basic courses, specialized basic courses, core elective courses, and research and thesis courses. Through a gradual and consistent curriculum,

students will systematically acquire specialized knowledge, skills, and ethics from their first year, ultimately aiming to complete a master's thesis.

## A practical curriculum tailored to each specialty

### Master's Course in Clinical Laboratory Technology

- **Advanced Courses for Clinical Laboratory Analysis:** Students conduct research into advanced laboratory analysis from the perspectives of clinical chemistry, immunology, genetics, and pathology, among others, in order to scientifically ascertain the pathology of diseases.
- **Advanced Courses for Clinical Laboratory Technology:** Students hone technical skills that will help to improve both the quality of laboratory technology and front-line laboratory environments, including data analysis using routine testing data and the development of new technology.

### Master's Course in Clinical Engineering

- **Core Clinical Engineering Courses:** Students conduct fundamental research in clinical engineering that will serve as the foundations for creating new medical technologies.
- **Innovative Clinical Engineering Courses:** Students work on creative research aimed at developing medical devices and therapeutic apparatus.
- **Advanced Clinical Engineering Courses:** Students acquire the applied knowledge and skills required to use advanced technology safely and effectively in clinical settings.

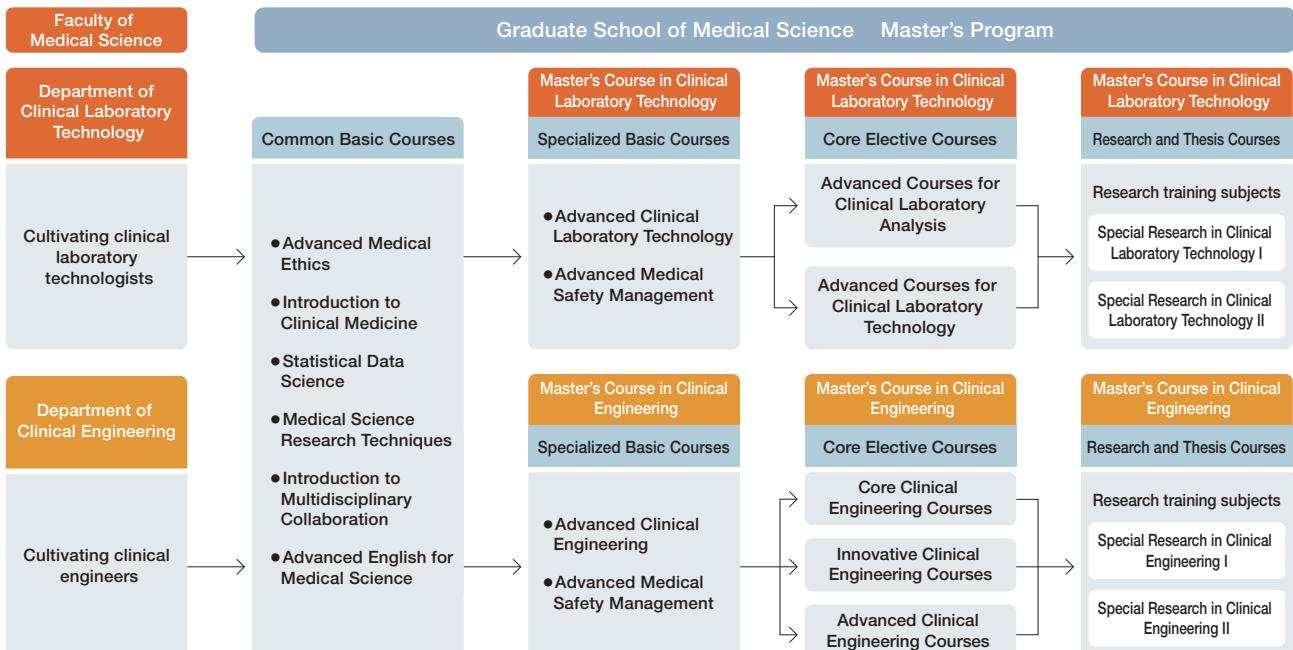
## Meticulous research supervision and learning process

Faculty members provide close research supervision focused on the preparation of each student's master's thesis, offering phased support throughout the process from choosing the topic and analyzing prior research to conducting data analysis and presenting

the results. This support nurtures in students the ability to choose their own research topic grounded in issues faced in clinical settings, and to formulate research outcomes that will contribute to the advancement of medical care.

In this way, the practical education and systematic research support provided by the Graduate School of Medical Science fosters professionals and researchers who will be immediately effective in front-line medical settings, while also having the ability to open up new frontiers in future medical care.

### Relationship to the faculty providing foundational education



# Graduate School of Medical Science (Course Selection Models and Career Plans)

## Master's Course in Clinical Laboratory Technology

With a view to post-graduation career paths, we have designed course selection models aimed principally at those who aspire to become teachers or researchers, and those who aim to become administrators or leaders at hospitals and other organizations. All students take common basic courses that teach them the fundamentals of medical science and basic core compulsory courses focused on the basics of clinical laboratory technology.

◆ Students then choose one of the following specialist domains according to their aspirations:

### Advanced Analytics for Clinical Laboratory Technology:

Choosing between Pathological Analysis and Infectious Disease Analysis, students undertake in-depth study of advanced laboratory technology providing insights into the nature of pathological conditions or infectious diseases.

### Advanced Technical Skills for Clinical Laboratory Technology:

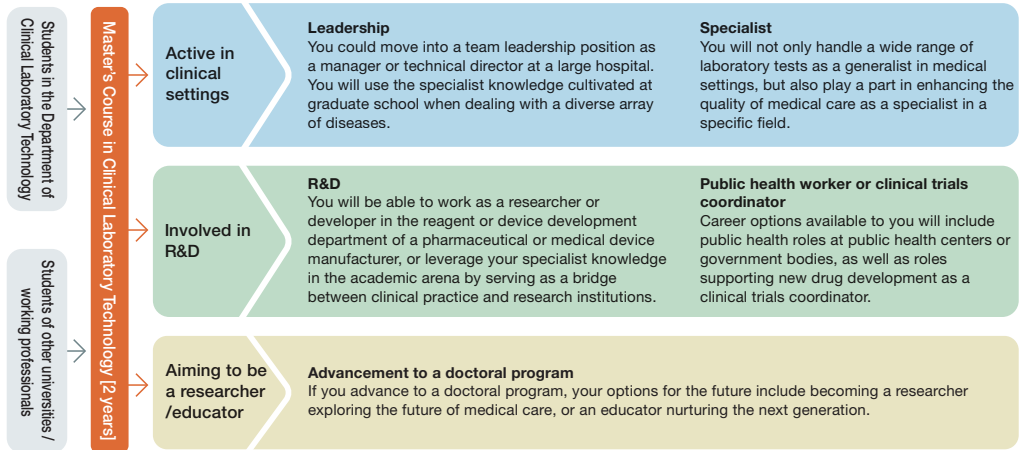
Choosing between Specialist Clinical Laboratory Technology and General Clinical Laboratory Technology Management, students undertake practical study of the clinical significance of day-to-day laboratory technology, along with laboratory management.

Research training subjects facilitate phased learning covering everything from the formulation of a research plan through to the authoring of papers, aiming to enable students to complete their master's thesis.

## CAREER

### Post-graduation career plans

A wide range of career plans supporting the medical care of the future will be available to graduates of this program, including specialist or team leader at a medical institution, educator, or researcher.



## Master's Course in Clinical Engineering

With the objective of cultivating personnel who will contribute to technological innovation and team-based medicine, we have designed course selection models suitable for both those who aspire to become teachers or researchers, and those who aim to become administrators or leaders at hospitals and other organizations. All students take common basic courses that teach them the fundamentals of medical science and basic core compulsory courses focused on the basics of clinical engineering.

◆ Students then choose one of the following specialist domains in order to acquire more specialized knowledge and skills:

### Core Clinical Engineering Courses:

Learn applied technologies underpinning the foundations of medical technology

### Innovative Clinical Engineering Courses:

Take on the challenge of creating new medical devices and therapies

### Advanced Clinical Engineering Courses:

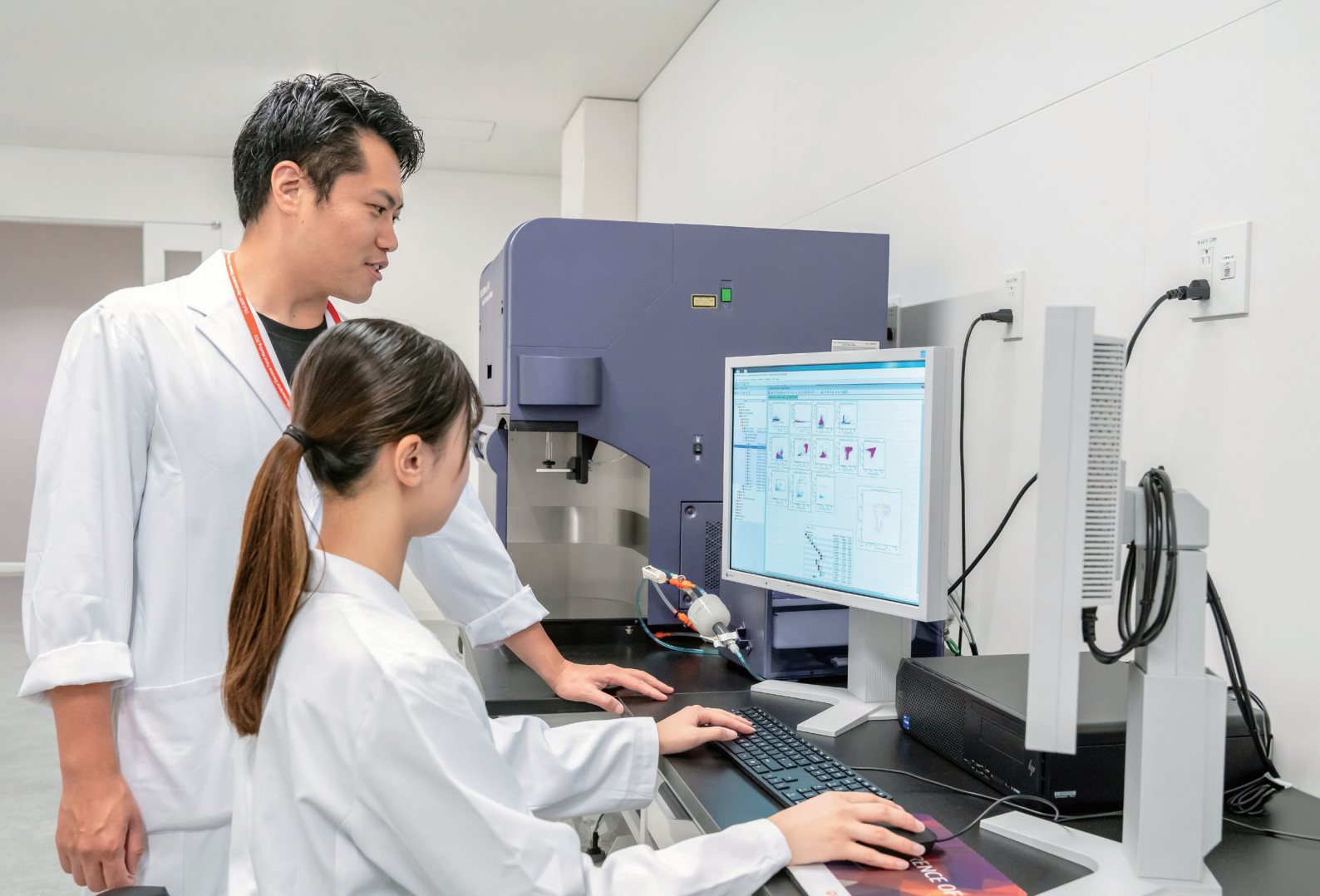
Specialize in the operation of advanced devices and their clinical applications

## CAREER

### Post-graduation career plans

Graduates of this program will be able to aspire to important roles that contribute to the advancement of medical devices, including team leader at a medical institution, researcher, or educator.





## Graduate School

# Graduate School of Pharmacy and Pharmaceutical Sciences

### Doctoral Program

With the rapid aging of society and evolving lifestyles, healthcare is becoming increasingly sophisticated and specialized. As such, pharmacists are expected to demonstrate the highest ethical standards and advanced professional expertise, as well as a profound understanding of medical safety. In addition, there is an urgent need to cultivate pharmacists who are also equipped with the ability to conduct clinical pharmacy research. However, at present, only a limited number of pharmacists are capable of discussing matters on the basis of evidence-based medicine, and the field faces numerous challenges, including inadequate human resource development systems in the areas of clinical pharmacy and specialist pharmacy, along with a lack of leaders, and insufficient management education. In light of this background, there is a pressing need to cultivate pharmacist-scientists equipped with both clinical and research perspectives.

At the same time, new drug discovery modalities are emerging all the time, thanks to advances in the life sciences and technology. A deep understanding of clinical practice is essential in order to foster pharmacy researchers capable of accurately understanding these new modalities and linking them into practical research. With its nine undergraduate faculties, seven graduate schools, and six affiliated hospitals, Juntendo University has a track record of integrating healthcare, education, and research to achieve progress. The Graduate School of Pharmacy and Pharmaceutical Sciences takes full advantage of these strengths, and attaches importance to the coordination of pharmacy education with clinical practice.

The doctoral program in pharmacy promotes wide-ranging research from basic to advanced fields, and cultivates personnel equipped not only with advanced expertise, but also a good general education, an international outlook, and planning ability. In addition, to ensure that graduates of the program can play an active role as researchers, educators, and professionals in a diverse array of fields after receiving their degree, we have established two courses—the Advanced Pharmacy Research Course and the Clinical Pharmacy Research Course—with the aim of nurturing personnel who will be able to contribute to society.



## Become a pharmacist shaping the future of therapeutics Graduate education designed to cultivate world-class pharmaceutical professionals by linking drug discovery with clinical practice

With the advent of the super-aging society and changes in lifestyles, medical care is becoming increasingly sophisticated and specialized. As such, pharmacists require a highly ethical perspective and great expertise, as well as a profound understanding of medical safety. In addition, there is an urgent need to cultivate pharmacists who are also equipped with the ability to conduct clinical pharmacy research. However, at present, only a limited number of pharmacists are capable of discussing matters on the basis of evidence-based medicine, and the field faces numerous challenges, including inadequate human resource development systems in the areas of clinical pharmacy and specialist pharmacy, along with a lack of leaders, and insufficient management education. In light of this background, there is a powerful need to nurture pharmacist-scientists equipped with both clinical and research perspectives.

At the same time, new drug discovery modalities are emerging all the time, thanks to advances in the life sciences and technology. A deep understanding of clinical practice is essential in order to foster pharmacy researchers capable of accurately understanding these new modalities and translating them into clinically applicable research. With its nine undergraduate faculties, seven graduate schools, and six affiliated hospitals, Juntendo University has a track record of organically blending medical care, education, and research to achieve progress. The Graduate School of Pharmacy and Pharmaceutical Sciences takes full advantage of these strengths, and attaches importance to the coordination of pharmacy education with clinical practice.

The doctoral program in pharmacy promotes wide-ranging research from basic to advanced fields, and cultivates professionals who possess advanced expertise, a broad academic foundation, an international outlook, and planning ability. In addition, to ensure that graduates of the program can play an active role as researchers, educators, and professionals in a diverse array of fields after receiving their degree, we have established two courses—the Advanced Pharmacy Research Course and the Clinical Pharmacy Research Course—with the aim of nurturing personnel who will be able to contribute to society.

The Advanced Pharmacy Research Course seeks to foster researchers and educators capable of producing research outcomes that directly inform clinical practice, in order to create the latest drug modalities. As well as developing an understanding of clinical

questions and needs, and gaining unsurpassed expertise and insight, students will acquire the ability to undertake in-depth multidisciplinary investigation, and to think flexibly from an international perspective about not only basic research in medicine and pharmacy, but also its clinical applications.

At a time when a steady stream of new pharmaceuticals is emerging, the Clinical Pharmacy Research Course enables students to gain the ability to think logically about increasingly advanced and complex drug therapies, and to pursue them scientifically. The course aims to cultivate highly skilled professionals with practical skills that will ensure they can play an active role in medical settings as clinical pharmacists and clinical specialist pharmacists, as well as equipping them with advanced management abilities in the field of drug therapy. It also seeks to nurture pharmacists equipped with a grounding that will enable them to play an active role at universities and research institutions as educator-researchers.

The Graduate School of Pharmacy and Pharmaceutical Sciences offers three specialist domains; supervisors in each domain support students in acquiring advanced expertise through lectures and practical classes in the research field they cover, while also providing one-on-one guidance tailored to each student's research topic.

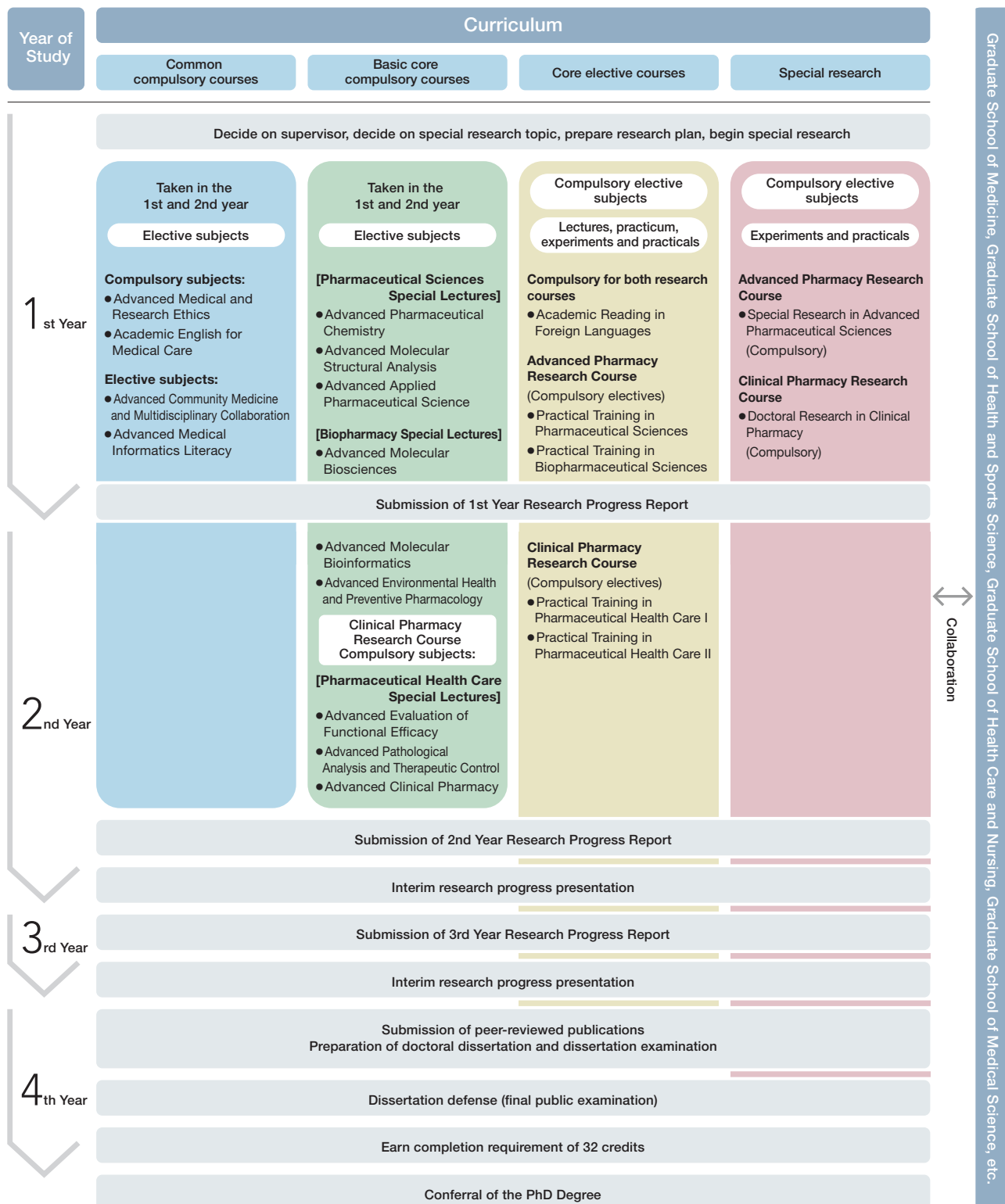


### Graduate School of Pharmacy specialist domains and associated research fields

Specialist Domain	Research Fields
Pharmaceutical Sciences	Pharmaceutical chemistry, molecular structural analysis, applied pharmaceutical science
Biopharmacy	Molecular biosciences, molecular bioinformatics, environmental health and preventive pharmacology
Pharmaceutical Health Care	Functional efficacy analytics, pathologic analysis and control, clinical pharmacy

# Graduate School of Pharmacy and Pharmaceutical Sciences (Doctoral Program)

## Process through to graduation



Graduate School of Medicine, Graduate School of Health and Sports Science, Graduate School of Health Care and Nursing, Graduate School of Medical Science, etc.



# Juntendo's Progress Reflects the Needs of the Age

Juntendo's founder SATO Taizen

From a private school of medicine to a medical college, and then to a university

- 1838 • Juntendo Private School of Medicine founded
- 1873 • Juntendo Hospital established
- 1896 • Juntendo Hospital Nursing Training School established

Aiming to cultivate physicians with the right spirit and skills, primarily via the school of medicine

- 1943 • Juntendo Medical College established
- 1946 • Became Juntendo Medical University after an upgrade in status
- 1951 • Juntendo University established under the new university system; Faculty of Physical Education established
- 1952 • Faculty of Medicine Department of Medicine established
- 1954 • Nursing Training Institute reorganized to form Juntendo Practical Nursing Training Academy
- 1959 • Graduate School of Medicine (doctoral program) established
- 1961 • Juntendo Practical Nursing Training Academy reorganized to form the High School of Nursing Affiliated to Juntendo University Faculty of Medicine
- 1964 • High School of Nursing Affiliated to Juntendo University Faculty of Medicine reorganized to form the Juntendo High School of Nursing
- 1967 • Juntendo University Izu Nagaoka Hospital (now known as the Shizuoka Hospital) established
- 1971 • Graduate School of Physical Education (master's program) established
- 1976 • Juntendo High School of Nursing renamed the Juntendo College of Nursing
- 1984 • Juntendo University Urayasu Hospital established

## 1838 onward

Juntendo founder Sato Taizen established Wadajuku as a school of Dutch (European) medicine in Edo's Yagenbori district in 1838, after studying Western knowledge in Nagasaki with a view to becoming a physician. He subsequently relocated to Sakura in Shimofusa Province and opened Juntendo, a hospital and private school of medicine. Taking over his father's mission, Taizen's son Sato Takanaka became Juntendo's second director and relocated Juntendo from Sakura to Yushima in Hongo in 1873. It was these two men who laid Juntendo's foundations.

## ◆ 1943 onward

To further advance its goal of cultivating physicians with the right spirit and skills, Juntendo opened its medical college in 1943. This was renamed Juntendo Medical University three years later. In 1951, as well as taking on its current name, Juntendo University established the Faculty of Physical Education to cultivate health and physical education instructors equipped with medical knowledge. Since then, Juntendo has produced many talented individuals, not only in the world of medical science, but also in the fields of health, physical education, and sport.

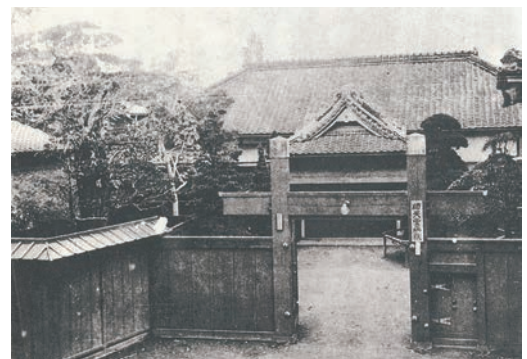


Sato Takanaka

In 1869, the Meiji government appointed Takanaka to the post of Senior Professor (person in charge) of Daigaku Toko (the forerunner of what is now the University of Tokyo's Faculty of Medicine). As the institution's first dean, his duties encompassed both educating students and providing medical care.

In 1871, he was appointed Chancellor of the University, Senior Professor and Senior Court Physician, and was then named Ministry of Education Senior Professor and Court Physician under a systemic reform.

In 1873, he established Juntendo Hospital in Tokyo's Shitaya Neribeicho, where he practiced as a physician while also educating students in basic and clinical medicine.



Juntendo's premises in Sakura (1843-1869)

For more than 180 years, Juntendo has consistently striven to support human life and health while meeting the needs of the age, based on the university motto *Jin* (benevolence) and its guiding principle of continuously moving forward. Now, in the 21st century, Juntendo has grown into one of Japan's foremost comprehensive health universities, with a Faculty of Medicine, Faculty of Health and Sports Science, Faculty of Health Care and Nursing, Faculty of Health Science and Nursing, Faculty of International Liberal Arts, Faculty of Health Science, Faculty of Medical Science, Faculty of Health Data Science, and Faculty of Pharmacy.

**Established as a truly comprehensive health university to meet the need for greater health consciousness, eventually becoming a world-class university and graduate school**

- 1988 • 150th anniversary of Juntendo's founding; new Sakura Campus opened
- 1989 • Juntendo College of Nursing reorganized to form the Juntendo Medical College of Nursing (Urayasu Campus)
  - Juntendo University Koshigaya Hospital established
- 1993 • Faculty of Physical Education reorganized into the Faculty of Health and Sports Science (Sakura Campus)
- 1997 • Graduate School of Physical Education renamed the Graduate School of Health and Sports Science
- 2000 • Graduate School of Health and Sports Science (doctoral program) established
- 2004 • Three-year program at Juntendo Medical College of Nursing reorganized to form the four-year Faculty of Health Care and Nursing
  - Juntendo Tokyo Koto Geriatric Medical Center established
- 2005 • Juntendo University Izu Nagaoka Hospital renamed Juntendo University Shizuoka Hospital
  - Juntendo University Nerima Hospital established
- 2007 • Graduate School of Health Care and Nursing (master's program) established
- 2010 • Faculty of Health Science and Nursing established (Mishima Campus)
- 2013 • 175th anniversary of Juntendo's founding
  - Graduate School of Medicine (master's program) established
- 2014 • Graduate School of Health Care and Nursing (doctoral program) established
- 2015 • Faculty of International Liberal Arts established (Hongo-Ochanomizu Campus)
- 2019 • Faculty of Health Science established (Hongo-Ochanomizu Campus)
- 2022 • Urayasu-Hinode Campus opened in Urayasu City, Chiba Prefecture
  - Faculty of Medical Science established (Urayasu-Hinode Campus)
- 2023 • Graduate School of Health Science (master's program) established
  - Faculty of Health Data Science established (Urayasu-Hinode Campus)
- 2024 • Graduate School of International Liberal Arts (master's program) established
  - Faculty of Pharmacy established (Urayasu-Hinode Campus)
- 2026 • Graduate School of International Liberal Arts (doctoral program) established
  - Graduate School of Medical Science (master's program) established
  - Graduate School of Pharmacy and Pharmaceutical Sciences (doctoral program) established

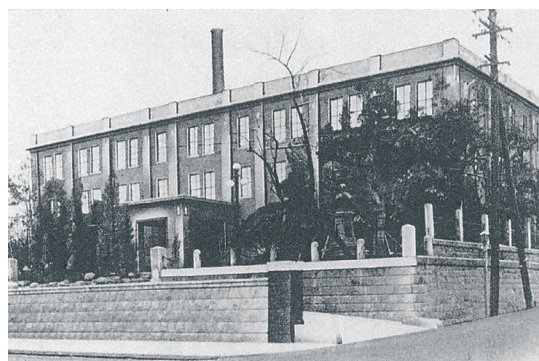
**◆1988 onward**

In response to the aging of the population coupled with a declining birthrate and growing public awareness of medicine and health, Juntendo opened a medical college of nursing to cultivate medical nursing professionals capable of meeting the needs of the age. It also reorganized the Faculty of Physical Education to form the Faculty of Health and Sports Science, in order to respond to societal demand and changes in the social environment surrounding sport and the sports industry. Juntendo is striving to nurture personnel who will contribute to the formation of wholesome and cultured lives through scientific research into health and sport, as well as the creative application of this research.

In the 21st century, as medical treatment has become more advanced and society has seen longevity increase, high-quality nursing services that play a key role in medical care and health care are required. Accordingly, Juntendo reorganized its medical college of nursing to establish the Faculty of Health Care and Nursing. Today, based on partnerships between the Faculty of Medicine, Faculty of Health and Sports Science, Faculty of Health Care and Nursing, Faculty of Health Science and Nursing, Faculty of International Liberal Arts, Faculty of Health Science, Faculty of Medical Science, Faculty of Health Data Science, and Faculty of Pharmacy, Juntendo leads the world of education as a true comprehensive health university that cultivates medical professionals, health professionals, and sports educators imbued with the spirit of *Jin*.



Juntendo in 1868



Juntendo Hospital after the Great Kanto Earthquake

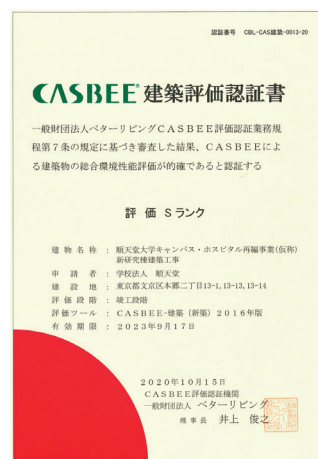
## Our new research building promotes free and active interdisciplinary research exchange

In 2018, marking the 180th anniversary of Juntendo's founding, we opened our new education and research building. Aimed at cultivating talented individuals capable of contributing to society at the international level, it is equipped with open plan research facilities and equipment that encourage lively exchanges that transcend the boundaries between basic and clinical research. In addition, its auditoria and conference rooms boast cutting-edge audiovisual and ICT equipment appropriate to this age of internationalization.

Occupying the 4th to 12th stories, the research floors house both basic and clinical laboratories in open plan facilities offering unobstructed views. The nine floors are linked by a central staircase, creating a sense of unity among the researchers. The 12th floor has been developed as the floor for academic-industrial collaboration to promote open innovation, serving as a center for joint research involving startup incubation and advanced collaborative research between industry and academia.

The building has been awarded the top-level Platinum certification under the Leadership in Energy and Environmental Design for New Construction (LEED-NC) program, an international environmental assessment and certification system originating in the U.S. that recognizes pioneering environmentally friendly buildings. It has also received the top-ranked S rating under Japan's Comprehensive Assessment System for Built Environment Efficiency (CASBEE).

This is the first university research facility in Japan to have been doubly certified at the highest level.



CASBEE Evaluation Certificate



Building 7 (historical facade)



Ariyama Noboru Memorial Hall



Conference room and culture room



Ogawa Auditorium (Ogawa Hideoki Auditorium commemorating the 175th anniversary of Juntendo's founding)



Joint research laboratory



### New research building (Building 7)

The design replicates the facade of Juntendo Hospital's main building as it looked in the Meiji period



Exhibition Gallery



Dining Hall

# Campus and Affiliated Hospital Access



## Headquarters: Hongo-Ochanomizu Campus

Faculty of Medicine

Graduate School of Medicine (Master's/Doctoral Program)

Faculty of International Liberal Arts

Graduate School of International Liberal Arts (Master's/Doctoral Program)

Faculty of Health Science

Graduate School of Health Science  
(Master's/Doctoral Program)

2-1-1 Hongo, Bunkyo-ku, Tokyo 113-8421  
Tel: 03-3813-3111 (switchboard)



## Sakura Campus

\*First year Faculty of Medicine students study at the Sakura Campus.

Faculty of Health and Sports Science

Graduate School of Health and Sports Science  
(Master's/Doctoral Program)

1-1 Hiraka-gakudai, Inzai City, Chiba Prefecture 270-1695  
Tel: 0476-98-1001 (switchboard)



## Urayasu Campus

Faculty of Health Care and Nursing

Graduate School of Health Care and Nursing  
(Master's/Doctoral Program)

2-5-1 Takasu, Urayasu City, Chiba Prefecture 279-0023  
Tel: 047-355-3111 (switchboard)



## Mishima Campus

Faculty of Health Science and Nursing

Graduate School of Health Care and Nursing (Satellite Campus)  
(Master's/Doctoral Program)

3-7-33 Omiya-cho, Mishima City, Shizuoka Prefecture 411-8787  
Tel: 055-991-3111 (switchboard)



## Urayasu-Hinode Campus

Faculty of Medical Science

Graduate School of Medical Science (Master's Program)

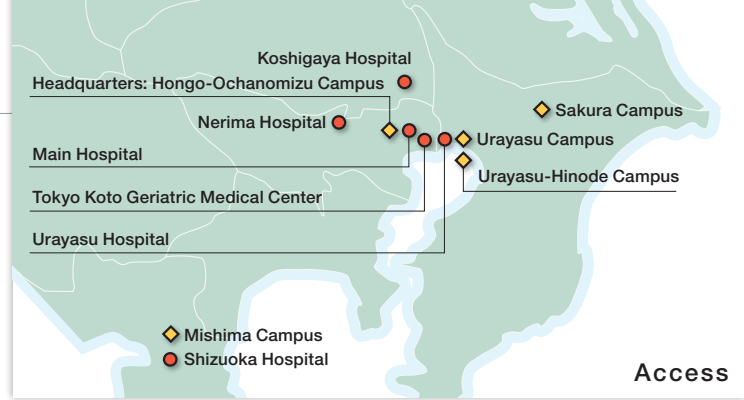
Faculty of Health Data Science

Graduate School of Health Data Science  
(Master's/Doctoral Program)

Faculty of Pharmacy

Graduate School of Pharmacy and Pharmaceutical Sciences (Doctoral Program)

6-8-1 Hinode, Urayasu City, Chiba Prefecture 279-0013  
Tel: 047-354-3311 (switchboard)



### Junjendo University Hospital (Main Hospital)

One of Japan's foremost general hospitals since it opened in the 1870s, this medical institution has consistently been a leader of Japan's medical community, thanks to its advanced knowledge and cutting-edge technology. It sees about 4,500 outpatients per day on average, including patients from Southeast Asia and Western countries.

Number of beds: 1,051

3-1-3 Hongo, Bunkyo-ku, Tokyo  
Tel: 03-3813-3111 (switchboard)



### Junjendo University Shizuoka Hospital

This was established in 1967 as a core hospital for community medicine in eastern Shizuoka Prefecture. While its Emergency and Critical Care Center is its primary field of health care activity, this hospital is also working to enhance its framework for collaborative research with the Medical Research Center for Disaster. It makes a tremendous contribution to emergency medical care in the local community and introduced a helicopter air ambulance in 2004.

Number of beds: 633

1129 Nagaoka, Izunokuni City,  
Shizuoka Prefecture  
Tel: 055-948-3111 (switchboard)



### Junjendo University Urayasu Hospital

This affiliated hospital was established in Urayasu City, Chiba Prefecture in 1984. Since 1995, it has been a core hospital for the community, able to offer emergency medical care thanks to the introduction of high-specification ambulances in the cities of Urayasu and Ichikawa. It is also working to enhance its research framework, alongside the attached Institute for Environmental and Gender-Specific Medicine.

Number of beds: 785

2-1-1 Tomioka, Urayasu City, Chiba Prefecture  
Tel: 047-353-3111 (switchboard)



### Junjendo University Koshigaya Hospital

The Junjendo Institute of Mental Health Koshigaya Hospital, which was established in 1967, was reorganized in 1989 to create this neuropsychiatric hospital affiliated to the Faculty of Medicine. Working in close partnership with Junjendo Hospital, it provides seamless pre- and postgraduate education in psychiatry.

Number of beds: 226

560 Fukuroyama, Koshigaya City,  
Saitama Prefecture  
Tel: 048-975-0321 (switchboard)



### Junjendo Tokyo Koto Geriatric Medical Center

This medical center was established by the Tokyo Metropolitan Government in 2002 as a welfare and medical care complex. Since FY2004, it has been operated by Junjendo under a public-private partnership.

Number of beds: 404

3-3-20 Shinsuna, Koto-ku, Tokyo  
Tel: 03-5632-3111 (switchboard)



### Junjendo University Nerima Hospital

This general hospital was opened in July 2005 at the urging of Nerima City in Tokyo. It works closely with other local medical institutions and is equipped with functions that would enable it to serve as a key facility in the event of disaster (base isolated structure capable of withstanding earthquakes with a seismic intensity of 8). It also has some of Japan's best facilities for preventing hospital-acquired infections.

Number of beds: 490

3-1-10 Takanodai, Nerima-ku, Tokyo  
Tel: 03-5923-3111 (switchboard)



Juntendo, Tokyo  
Established 1838





**Juntendo University**

2-1-1 Hongo, Bunkyo-ku, Tokyo 113-8421 Tel: 03-3813-3111 (switchboard)  
<https://www.juntendo.ac.jp/>

